



优耐德电梯有限公司 UNITE ELEVATOR CO.,LTD.

- 地址 / 中国 · 浙江省杭州市滨安路 1181 号
- Add/1181 Bin'an Road, Hangzhou, China, 310052
- Http://www.uelevator.com

本书为一般信息出版物，我们保留随时更改产品技术和说明的权利。
本书中的任何字句，无论其字面意思或含义，对任何产品的用途和质量，或者任何购销合同条款的表述与更改均不承担责任。
This book is a publication of general information, and we reserve the right to alter the techniques and specifications of the products at any moment.
Regardless of their literary meanings or implications, no liabilities shall be undertaken for any words and sentences about applications and qualities of any products in this brochure, or for definitions and alterations of any articles and clauses in the purchase and sales agreements.
版本号Edition number: UNK1305

 Service Line
服务热线 / 400-826-1112

优耐德电梯
UNITE ELEVATOR

尊享科技 · 安全舒适
SAFETY AND COMFORT FROM HIGH TECHNOLOGY

UNITE

UN-Victor T
PASSENGER
ELEVATOR

Safety and comfort
from high technology
尊享科技 安全舒适

优耐德 —— 一个站在巨人肩上成长的企业

UNITE: Agiant-based enterprise





UN-VICTOR T

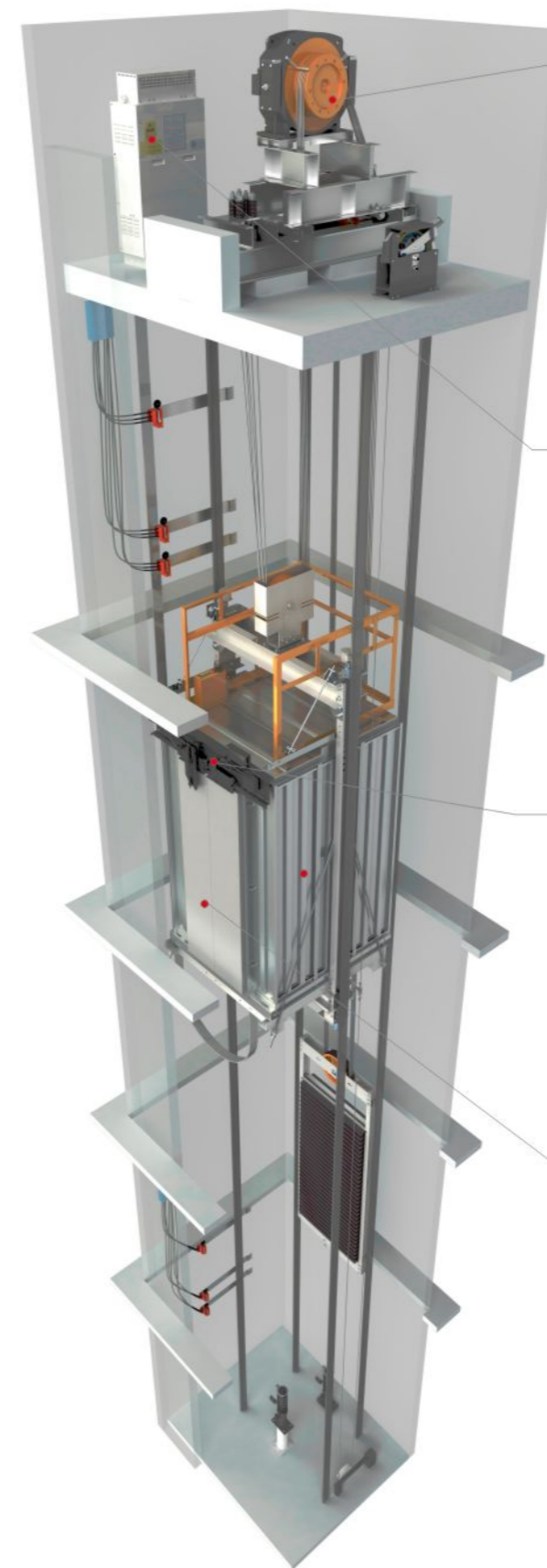
随着现代都市的发展，越来越多的高端场合拥有高层或多层的设计，格调奢华的环境，自然需要高端配备的电梯产品。UN-VICTOR T电梯，为高端场合而生，为更多尊贵贵宾提供舒适体验而生。提升乘坐者的感官体验，让乘坐者享有舒适、科技、安全的上下之旅。

With development of modern city, more and more high-end places are high-rise or multi-storey design with luxurious environment. This needs elevator product with high-end configuration, without doubt. UN-VICTOR T emerges for such place to provide experience of comfort for VIP, improve passenger's sensorial experience and bring up-and-down movement with comfort, technology and safety.

主要配置

Main configuration

载重范围 Range of load	630kg-1600kg
速度范围 Range of speed	1.0m/s-2.5m/s
主机 Host	VITO/GETM
控制柜 Control cabinet	U-CON
门机 Door operator	永磁变频 Permanent-magnetic VF
轿厢 Car	U-CR065
操纵箱 Operation panel	U-CF200
外召 Hall call	U-ZW1500
门保护 Door protection	光幕 Light curtain



◎ 永磁电机 高效曳引 High-efficiency driving from permanent-magnetic motor

采用稀土材料永磁同步无齿轮曳引系统，运行更平稳，到达更迅速。效率提升高达40%。
 With rare earth permanent-magnetic gearless driving system, the elevator runs more stably and faster, and its efficiency is improved by 40%.

◎ 上下之旅 智能控制 Cary EMS advanced intelligent elevator systems

智能控制系统，通过通讯网络，更精确操纵电梯，确保运行平稳舒适。
 Intelligent control system, operated the elevator through the communication network, more precisely, to ensure a smooth and comfortable running.

◎ 电梯安全 可靠门机 Safety based on reliable door operator

采用防水处理的光幕门机系统，防水等级IP65，光速达154束以上，保障乘客通畅出入，乘坐安全。
 Waterproofed light curtain door operator system is IP65 in waterproofing grade and above 154 beams in light speed, which guarantees smooth passage and safe taking.

◎ 舒适空间 安全保护 Comfortable space, safety protection

框架式轿厢外壳保护，保障平层稳定，上下如履平地，更增安全。采用2.4M净高大轿厢，搭配LED自然光源照明，更有多重选配装潢，贵宾出入，不同凡响。
 Protection on shell of frame-type car makes leveling stable and up-and-down movement firm, improving safety. Large car with net height of 2.4m, LED natural light source as well as multi-level optional decoration highlights VIPs.



精准控制 智在科技

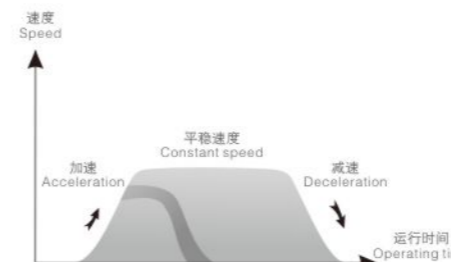
Precise control based on intelligent technology

智能环保 高效节能 —— 电脑控制系统

Intelligent, environment-friendly, high-efficiency, energy-saving:
computer control system

待机状态下，控制系统将自动切断轿内照明及风扇的电源，从而减少待机时的能耗，并采用32位CPU矢量闭环控制技术，充分满足动态调节要求；高精度脉冲编码器及时准确地把电梯即时运行速度反馈给控制系统，确保电梯自动生成最佳速度曲线；拥有丰富的功能扩展接口，同时满足标准功能及客户个性化功能需求。

In standby state, control system automatically disconnects power supplies of lighting and fan thus reduces energy consumption during standby. 32-bit CPU closed-loop vector control technology full meets requirements for dynamic adjustment. High-precision pulse encoder feeds real-time running speed back to control system timely and accurately, and enables automatic generation of optimal speed curve. Rich in function extension interface, the elevator can meet demands for standard function and personalized function.



高速上下 如履平地 —— VVVF矢量驱动控制器

High-speed up-and-down movement with firmness:
VVVF vector driving controller

采用矢量闭环控制技术，其调速装置能自动生成最佳速度曲线，是电梯在加速、减速、制动时更平稳，并减少层间运行时间，让乘坐更舒适。

With closed-loop vector control technology, speed-regulating device of the elevator can automatically generate optimal speed curve, make acceleration, deceleration and braking more stable, shorten inter-floor running time and better comfort passengers.

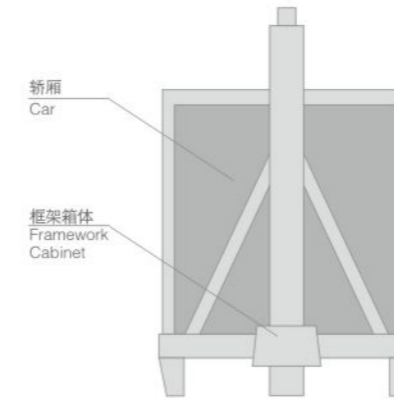
动力非凡 节能轻静 —— 高效驱动系统

Outstanding power, energy saving, silence:
high-efficiency driving system

UN-VICTOR T采用永磁同步无齿轮曳引机驱动、噪音低、振动小、结构紧凑、体积小，提升效率高达30%~40%；无油污污染的密封式轴承，确保电梯高效上下，平稳安静。

Permanent-magnetic synchronous gearless driving machine of UN-VICTOR T features low noise, less vibration, compact structure and small volume, improving efficiency by 30%~40%. Sealed bearing free of oil pollution makes movement efficient, stable and silence.

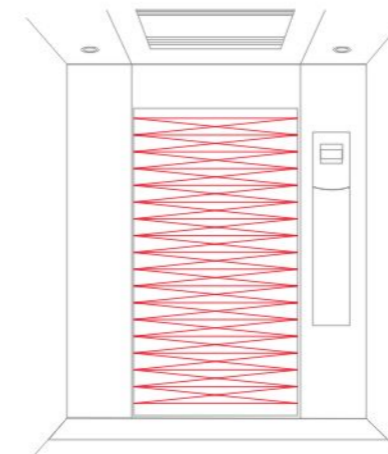




框架保护 多重放心 —— 框架式箱体结构 Frame protection, multi-level reassurance: frame-type car structure

在轿厢停靠首层时，可以有效减少井道底部对轿厢底部的冲击，更好的保护轿厢乘客安全。

At parking on the first floor, impact on bottom of car from bottom of hoistway can be effectively reduced, which better protects personal safety of passenger.



灵敏伺服 通畅出入 —— 防水型红外光幕 Sensitive servo, smooth passage: waterproof infrared light curtain

红外光幕是轿门上的一道安全保护网，对进入其探测平面内的人或物都可做出灵敏反应，减少“门夹人”的情况。做了防水保护处理后的红外光幕更耐用，让保护更周到。

As a safety protection network on car door, infrared light curtain can give sensitive response to both passenger and cargo into its detection plane, and lowers occurrence of “pinching”. Waterproofed infrared light curtain is better in durability and brings more considerate protection.

安全保障 高效运行

Safety guarantee, high-efficiency running

优耐德电梯致力于任何确保乘客安全的设计，杜绝隐患。

UNITE guarantees safety everywhere and is dedicated to designing elevator that guarantees personal safety of passenger and precludes hidden danger.



私密安全 全面保障 —— 贵宾信息安全 (选配) Privacy security, full-guaranteed: VIP information security (optional)

通过选配的智能信息安全系统，可使贵宾乘客更有效的享有信息安全，保护贵宾的个人隐私，步入电梯，即享全面安全。

Based on optional intelligent information security system, VIP can enjoy more effective information security and protect personal privacy. Full safety is guaranteed for any entrant.



人性空间 舒适从容

Humanistic, comfortable and calm space

既是大人物 自然大空间——2.4M净高大轿厢，体现大家风范

Large natural space for something:
large car (net height: 2.4m) with magnificence



比传统电梯轿厢增高20公分，更大空间，自有更舒适感受。
Larger space (20cm higher than traditional car) brings comfort.



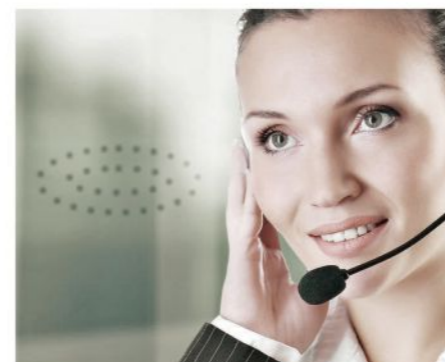
细节之处 体贴设计 ——盲文设计按钮，彰显人性之美
Detail with considerate design:
button with Braille incarnating humanism

外召按钮带盲文的人性设计，让电梯产品对人的关爱无微不至。
Hall call button is humanistic design with Braille, which implements meticulous care.



封闭空间 清风徐来 ——自然清新通风系统
Closed space with good ventilation:
natural fresh air ventilation system

分解、祛除异味，有效改善密闭轿厢空间中的空气质量，又可协助调节箱内温度。令乘客呼吸畅快，自然精力充沛。
Odor is removed by decomposition. Air quality in closed car is effectively improved, and temperature in car can be adjusted. This fills passenger with vigor based on unblocked breath.



平安出入 贴心报知——语音报站（选配）
Safe passage, thoughtful:
voice announcement (optional)

选配更好的信息提示功能，可使乘客通过语音提示轻松掌握电梯运行状态。
Depending on better function of information prompt (optional), a passenger can easily learn state of the elevator from voice prompt.

标准配置

Standard configuration



U-CR067

吊顶: U-CL029 发纹不锈钢、亚克力、LED 灯光源
 轿壁: 发纹不锈钢
 地板: PVC

Ceiling: U-CL029 hairline finished stainless steel, acrylic, LED light source
 Car wall: hairline finished stainless steel
 Floor: PVC

操纵箱: U-CF200 发纹不锈钢 6.4"STN
 召唤: U-ZW1500 发纹不锈钢 4.3"STN
 按钮: 按钮带盲纹

Operation panel: U-CF200 hairline finished stainless steel 6.4"STN
 Calling board: U-ZW1500 hairline finished stainless steel 4.3"STN
 Button: With Braille

可选配置

Optional configuration



轿厢: U-CR065 发纹不锈钢
 吊顶: U-CL032 发纹不锈钢、亚克力、LED 灯光源
 Car: U-CR065 hairline finished stainless steel
 Ceiling: U-CL032 hairline finished stainless steel, acrylic, LED light source



轿厢: U-CR066 发纹不锈钢
 吊顶: U-CL030 发纹不锈钢、亚克力、LED 灯光源
 Car: U-CR066 hairline finished stainless steel
 Ceiling: U-CL030 hairline finished stainless steel, acrylic, LED light source

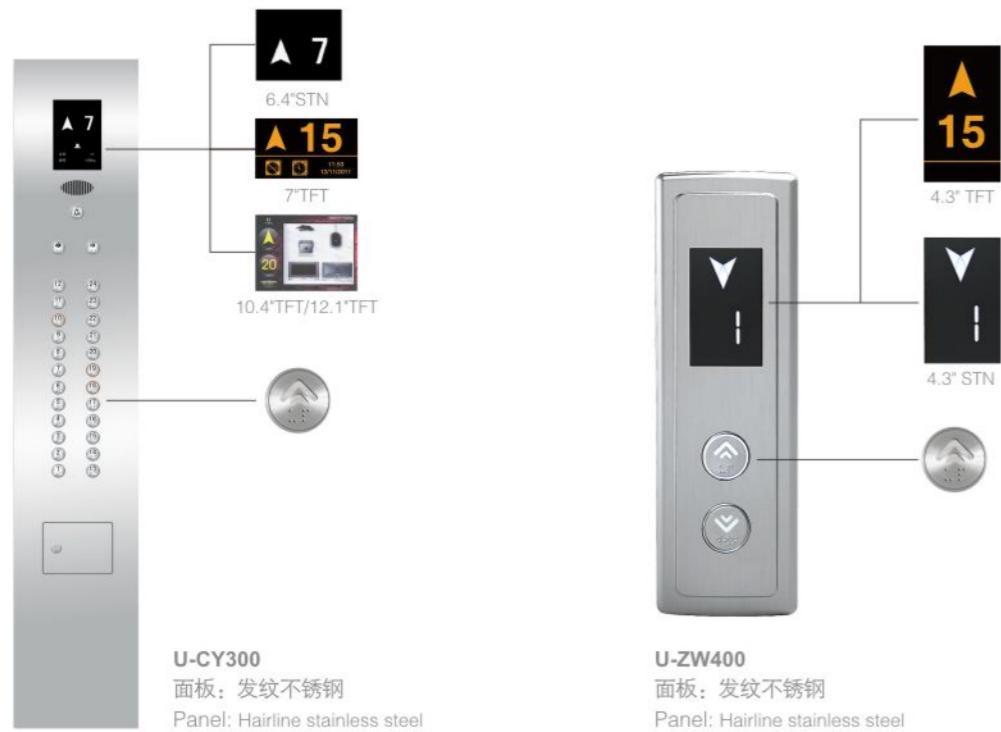


轿厢: U-CR068 发纹不锈钢
 吊顶: U-CL028 发纹不锈钢、亚克力、LED 灯光源
 Car: U-CR068 hairline finished stainless steel
 Ceiling: U-CL028 hairline finished stainless steel, acrylic, LED light source





可选配置 Optional configuration



可选装潢 Optional decoration



U-CR025

吊顶装饰: 喷粉钢板冲孔, 上覆亚克力
 轿壁装饰: 冰灰、黄褐喷粉钢板、镜面不锈钢
 前壁装饰: 喷粉钢板
 地板装饰: PVC

Ceiling decoration: Powder printing steel frame, coated with acrylic
 Cabin wall decoration: ice gray/fulvous powdered steel plate, mirror finished stainless steel
 Front wall decoration: Powder printing steel
 Floor decoration: PVC



U-CR026

吊顶装饰: 喷粉钢板冲孔, 上覆亚克力
 轿壁装饰: 浅驼色、百合彩喷粉钢板、发纹不锈钢
 前壁装饰: 喷粉钢板
 地板装饰: PVC

Ceiling decoration: Powder printing steel frame, coated with acrylic
 Cabin wall decoration: light camel/lily powdered color steel plate, hairline finished stainless steel
 Front wall decoration: Powder printing steel
 Floor decoration: PVC



U-CR027

吊顶装饰: 喷粉钢板框架、亚克力、筒灯
 轿壁装饰: 金黄色、珠光金喷粉钢板、镜面不锈钢
 前壁装饰: 喷粉钢板
 地板装饰: PVC

Ceiling decoration: Powder printing steel frame, acrylic, down lamp
 Cabin wall decoration: golden yellow/pearlized gold powdered steel plate, mirror finished stainless steel
 Front wall decoration: Powder printing steel
 Floor decoration: PVC

扶手 Handrail



U-HR001
 发纹不锈钢
 Hairline stainless steel



U-HR004
 发纹不锈钢
 Hairline stainless steel

地坪 Floor



U-FL004 PVC



U-FL006 大理石 Marble



U-FL011 大理石 Marble

整梯功能表

Standard/optional equipped with

乘客公共安全功能 · Public safety of passenger

光幕门保护 Light curtain protection	当两扇轿门的中间有东西阻挡时，导致光幕或安全触板动作，电梯就会开门。光幕保护在消防操作时不起作用。光幕防护等级 IP65。 When light curtain or safety edge acts in that there's obstruction between two door panels, door will be opened. During fireman's operation, the function is not available. Class of light curtain protection: IP65	●
防捣乱功能 Anti-nuisance function	当电梯处于轻载状态时，轿厢指令数达到或超过设定值时，系统将消除所有指令。 If elevator is in light duty and number of car command reaches or exceeds setting value, the system will eliminate all commands.	●
满载直驶 Full-load bypass	当轿厢内载荷达到满载预设值时，即进入满载直驶状态，电梯将不再应答厅外召唤而直接响应轿内指令直达指定楼层。 When load in car reaches preset full load, namely elevator enters full-load bypass, elevator will no longer respond to hall call, but directly reach designated floor in response to car command.	●
超载保护 Overload protection	当轿厢的载重量超出额定允许的载重时，超载蜂鸣器会鸣响以提示超载。此时显示超载，轿厢不关门，电梯停止运行。 When loading weight in car exceeds rated capacity, overload beeper will sound to indicate such overload. At this, neither door closes nor elevator sets out.	●
按钮防粘连保护 Button anti-adhesion protection	当按钮由于机械原因粘连时，电梯会屏蔽该层按钮，不响应该按钮的指令。 If adhesion occurs on a button due to mechanical fault, elevator will screen the button and no longer respond to command from the button.	●
门区二次防夹功能 Door zone secondary anti-pitch function	门机设定力矩检出功能，在卡阻时在设定力矩下不再提升力矩。 Door operator has function of torque detection. In case of jamming, torque won't be improved.	●
轿内紧急照明 Car emergency lighting	在轿内设置的紧急照明装置，停电时启用。 Emergency lighting device is provided in car, enabled in case of power failure.	●
轿内警铃 Car alarm bell	供在特殊情况下乘客通过按动轿厢内报警按钮，及时通知外界。 With the function, in special circumstances, passenger can press alarm button in car to timely notify the outside world.	●
关门超时保护 Door closing overtime protection	当电梯由于机械卡阻等原因导致不能关门到位超过预定时间，电梯重复三次关门后，未检测到门关闭信号，电梯会自动进入保护状态，当电梯监测到门已正常关闭时，电梯将恢复正常操作。 If door fails to full close within preset period due to mechanical jamming, and door closing signal is not detected after three times of door closing, elevator will automatically enter protection state. When normal door closing is detected, elevator will recover to normal running.	●
开门超时保护 Door opening overtime protection	当电梯由于机械卡阻等原因导致不能开门到位超过预定时间时，内外呼信号会自动取消，驶向相邻楼层开门并释放乘客。 If door fails to full open within preset period due to mechanical jamming, car call signal and hall call signal will be automatically cancelled, and elevator will run to adjacent floor to release passengers.	●
双门扇重力强关 Dual door panel forced closing upon gravity	当厅门连接钢丝失效时，重力垂会使主、副门扇强制合拢。 If connecting wire of hoistway door fails, gravity will force main panel and auxiliary panel to joint.	●
厅门强制开门机械禁止 Hoistway door forced opening and mechanical stop	在厅门钢丝绳断裂情况下，保护厅门外人员的作用。 The function is to protect personnel outside hoistway door in case that wire rope of hoistway door breaks.	●

终端越程保护 Terminal overtravel protection	电梯的上下终端都装有终端减速开关和终端极限开关，以保证电梯不会超越行程。 Both upper and lower terminal of elevator are equipped with terminal speed reducing switch and terminal limit switch to prevent overtravel.	●
消防功能 Fire prevention	消防功能作用后，电梯返回消防层楼进行，停止运行。 When the function acts, elevator will return to fire door and stop.	●
消防回馈 Fire feedback	当电梯完成消防运行后，系统回馈完成一个信号，方便楼宇系统接入。 When fireman operation ends on elevator, a signal will be fed back to facilitate access to building system.	●
就近平层 Local leveling	当电梯出现意外故障时，电梯层楼记忆，在恢复运行后，无须进行端站层楼恢复，提高运行效率。 If accidental fault occurs on elevator, current floor will be memorized, so that for recovery it is unnecessary to return to terminal landing. This improves running efficiency.	●
停电应急平层 Power failure emergency leveling	当由于大楼停电导致运行中的轿厢不在门区而困人时，停电应急平层装置就会启动，驱动电梯就近低速运行到门区开门放人。 If passengers are trapped in that running car is not in door zone in case of power failure, power failure emergency leveling will start and drive elevator to run to the nearest door zone at low speed, followed by door opening.	○
地震操作 Earthquake operation	配有地震操作功能时，如果发生地震，地震检测装置动作，该装置有一个触点信号输入到控制系统，控制系统控制电梯就近停靠，而后开门放客停梯（地震检测装置客户自理）。 With the function, in case of earthquake, earthquake detector acts, and inputs a contact signal to control system, which drives elevator to locally park, open door to release passengers and stop. Earthquake detector shall be self-provided by customer.	○
封芯防失速功能 Core closing anti-stall function	当电梯停止运行后，电梯启运封星电路，闭合线圈在切割永磁体的磁力线时产生电流过程中产生反向力矩，避免电梯由于制动失效时，电梯失速。 When elevator stops, it will start core closing circuit. During current producing for cutting line of magnetic force of permanent magnet, opposite torque is produced to avoid stall due to braking failure.	●
门区外门开禁止 Door opening prohibition outside door zone	为安全起见，在门区外，系统设定不能开门。 For safety, door opening is disabled outside door zone.	●

电梯基本功能 · Basic functions of elevator

层楼显示 Floor display	为方便乘客了解电梯的运行方向，在轿内操纵面板和厅外召唤面板上有箭头状指示灯提示运行方向。 To make running direction known to passengers, there's arrow-like indicator lamp that indicates running direction, on car operation panel and hall call panel.	●
全集选 Full collective	电梯对大楼内上、下召唤信号、轿内选层指令及各种信号进行综合分析判断后，将自动优选与电梯运行方向一致的信号进行依次应答。 After comprehensively analyzing and judging up/down call signal, floor selection command in car and other signals, elevator will automatically prioritize signal consistent with current running direction, for orderly response.	●
司机功能 Attendant function	通过操作操纵箱内开关进入有司机操作状态，可由司机对轿厢乘客数量、厅外呼梯响应、开关门等进行管理。 When attendant operation is entered through switch in operation panel, attendant can control quantity of passenger, response to hall call, door opening/closing, etc.	●
司机直驶 Attendant bypass	进入司机状态后，按住操纵箱内 NSB 按钮，电梯不响应外召，直接驶向目的楼层。 In state of attendant operation, if the button NSB in operation panel is pressed, elevator will not give response to hall call but directly run to destination floor.	●

司机友好提醒 Friendly prompt for attendant	当电梯处于司机运行状态时，外部召唤登记使对应指示灯进行闪烁，提醒司机人员了解召唤的登记的情况（此功能和司机功能一起工作）。 In state of attendant operation, when hall call is registered, corresponding command lamp will flash to remind attendant to learn situation of such registration. The function acts together with attendant function.	●
VIP 独立服务 VIP independent service	为 VIP 乘客提供的一项特殊功能，使得 VIP 乘客可以以最快速度到达目的楼层。 Special for VIP passengers, the function can bring them to destination floor at the highest speed.	●
错误指令取消 Cancellation of false command	乘客按下指令按钮被响应后，发现与实际要求不符，可在指令登记后连接 2 次错误指令的按钮，该登记的信号就被取消，该功能可通过参数开通。 When a passenger finds nonconformity with actual demand after command button is pressed and such press is responded to, he can press button of false command twice continuously after command registration to cancel the registered signal. The function can be made available by parameter setting.	●
反向指令自动消除 Automatic elimination of command for reverse	当电梯到达最远层站将要反向时，原来所有后方登记的指令全部消除。 When the first or last landing is reached and elevator has to reverse, all commands originally registered will be eliminated.	●
本层厅外开门 Door re-opening	在正常关门过程中，厅外与电梯同向的召唤按钮被按下时，电梯将重新开门。 During normal door closing, when call button that indicates the direction consistent to current running direction is pressed in hall, door will be re-opened.	●
开门按钮开门 Door opening	电梯停在门区时，可以在轿厢中按开门按钮使电梯已经关闭或尚未关闭的门重新打开。 When elevator stops in door zone, opening button can be pressed in car to re-open full or partly closed door.	●
开门保持功能 Door opening keeping	在进入轿厢乘客较多，需延长开门时间时，可按住操纵面板上的开门保持按钮。 When not a few passengers enter car and it is necessary to prolong time of door opening, the button of door opening keeping on operation panel can be pressed.	○
基站锁梯 Locking at home landing	电梯进入锁梯状态，返回基站，停止使用。 The elevator enters locked state, returns to home landing and gets out of operation.	●
盲文按钮 Tactile button	指令按钮带有盲文标识，方便盲人乘客操作。 Command button is tactile, operable for blind passengers.	●
语音报站 Voice announcement	系统在配有语音报站功能时，电梯在每次平层过程中，语音报站器将报出即将到达的层楼，在每次关门时，报站器会预报电梯接下去运行的方向等。 With the function, during each leveling, voice announcer announces floor to be reached, and before each door closing, it forecasts subsequent running direction.	○
轿箱智能 IC 系统 Car intelligent IC function	IC 卡管理功能通过轿内和厅外读卡系统对特定层楼进行权限管理，对人员出入电梯进行智能管理，此功能仅对电梯有效不能与大楼其他 IC 卡管理集成。 IC card management implements right management for specific floor, through car and hall card reading system, based on which entry into and departure from elevator are subject to intelligent management. The function is only effective for elevator, and can't be integrated with other functions of IC card management in building.	○
蠕动再平层 Creep re-leveling	当由于进出乘客等原因引起负载变化使轿厢地坎与层门地坎的误差超过一定值时，电梯将会自动执行再平层，使轿厢回到准确平层位置。 If deflection of car sill from landing sill exceeds a limit due to load changing by entry or departure of passenger, elevator will automatically re-level to recover car to accurate position of leveling.	○
增效提前开门 In-advance door opening for efficiency improvement	当电梯运行接近门区位置时，在符合安全的条件下，电梯会提前开门并低速蠕动运行至平层位置。提高电梯运行效率。 When elevator approaches door zone, if safety conditions are met, it will open door in advance and creep at low speed to position of leveling. This improves running efficiency.	○

基站开门待机 Door opening for standby at home landing	当用户选择该功能时，电梯在无人员用梯时，将在基站开着门等待乘客。 With the function, when elevator is not used, it will wait with door opened at home landing.	○
来客访问 Visit	当有客人来到时，需要给客人进行电梯开放。（此功能需和楼宇系统、智能 IC 系统一起配套进行使用）。 The function is to open elevator for visitor. The function acts together with building system and intelligent IC system.	○
厅外到站钟 Hall arrival gong	选配该功能时，每一层的大厅里都装有上、下到站钟。用以告诉乘客该电梯即将到站。 If the optional function is selected, up/down arrival gong will be provided in hall on each level to inform passengers of arriving of elevator.	○
轿内到站钟 Car arrival gong	在电梯减速平层过程中会鸣响装在轿顶的到站钟，以提醒轿内乘客和厅外候梯乘客电梯正在平层，马上到站。 During speed reduction and leveling, arrival gong on car top sounds to inform passengers and waiters of leveling and arriving.	●
副操纵箱操作 Auxiliary operation panel	在有主操纵箱的同时，还可选配副操纵箱。乘客可以通过副操纵箱登记指令和门操作。 Auxiliary operation panel can be provided in addition to main operation panel. A passenger can implement command registration and door operation via auxiliary operation panel.	○
残疾人操纵箱操作 Operation panel for the handicapped	电梯可选配残疾人操纵箱，供残疾人进行特殊操作。 Operation panel for the handicapped can be selected for special operation by the handicapped.	○
自动返回基站 Automatic return to home landing	全自动运行时，如果设定自动返基站功能有效，当轿群中无指令和召唤时，电梯在一定时间（时间可通过参数设置）延迟后自动返回基站。 When elevator stops, it will start core closing circuit. During current producing for cutting line of magnetic force of permanent magnet, opposite torque is produced to avoid stall due to braking failure.	○
机房隔音减震装置 Machine room sound-proof and vibration-proof device	机房承重装置下专有特殊材质的隔音减震装置，降低轿厢和顶层大厅的噪音。 During full-automatic running, if the function is validated and there's no command or call in elevator group, elevator will automatically return to home landing after delay for some time (subject to parameter setting.)	●
轿内照明、风扇自动控制 Automatic control of lighting and fan in car	在没有接到任何操作指令的情况下，电梯在关门后的预定时间内，将进入节能模式，关闭轿厢内的照明和风扇。但在接到系统指令后，重新启动风扇和照明。 If no operation command is received, elevator will enter energy-saving mode and disconnect lighting and fan in car within preset time after door closing. When command is received, lighting and fan will be started.	●
并联 Parallel connection	该功能用于两台同型号电梯成组控制时使用，能自动选择最合适的应答，避免电梯重复停梯，缩短乘客候梯时间，提高运行效率。 The function is for group control of 2 elevators of the same model, supporting automatic selection of the most proper response. It avoids repeated parking, shortens waiting time and improves running efficiency.	○
系统安全 · System safety		
安全接触器触点检测保护 Contact detection and protection on safety contactor	系统检测安全继电器。接触器触点是否可靠动作，如发现触点的动作和线圈的驱动状态不一致，将停止轿厢一切运行。 The system detects reliable action of safety relay and contact on contactor. If nonconformity of action of contact with driving state of coil is found, any work in car will be stopped.	●
抱闸反馈检测功能 Brake feedback & detection	对抱闸继电器信号进行全程监控，当发现抱闸继电器的实际状态与给定的命令不符时，停止运行。 Brake relay signals Brake relay signal is always monitored. If nonconformity of actual state of brake relay with preset command is found, running will be stopped.	●
独立双制动器 Independent dual brake	驱动主机采用独立的制动器。 Independent brake is involved as main drive.	●

运行时间限制器 Running time limiter	当电梯运行过程中，如果连续运行了运行时间限制器规定的时间（最大 45 秒）发现平层开关没有动作，就停止轿厢一切运行。 During running, if leveling switch doesn't act after continuous running for time specified by running time limiter (max. 45s), any work in car will be stopped.	●
超速保护 Overspeed protection	当速度超出控制范围的运行导致的安全问题而设置的保护。 The function is to protect elevator against safety problem caused by running at speed out of control range.	●
低速保护 Low speed protection	为防止电梯在控制范围外低速运行导致安全问题而设置的保护。 The function is to protect elevator against safety problem caused by running at speed lower than control range.	●
主机过热保护 Primary machine overheat protection	由于机房温度过高或运行发热，电动机温度超过预设值时，电梯将自动进入保护状态。电梯就近停靠，开门安全疏散乘客并关闭轿厢内照明和电扇，等温度正常后，电梯恢复正常运行。 When motor temperature exceeds preset value due to overheat in machine room and heat produced in running, elevator will automatically enter state of protection, namely elevator will park locally, open door for passenger evacuation and disconnect lighting and circuit in car. When temperature gets normal, elevator will recover to normal running.	●
安全回路故障保护 Safety circuit fault protection	系统收到安全回路故障信号就紧急停车，并在有故障时防止电梯运行。 When safety circuit fault signal is received, elevator will be subject to emergency stop, and prevented from running under fault.	●
主控 CPU WDT 保护 Main control CPU WDT protection	主控板上设有 WDT 保护，当检测到 CPU 故障或程序有故障时，WDT 回路强行切断主控制器输出点，并使 CPU 复位。 WDT protection is provided on main control board. When fault of CPU or program is detected, WDT circuit will forcibly disconnect main controller output point and reset CPU.	●

保养安全功能 · Maintenance

五方通话 Five-party conversation	用于在特殊情况下通过设置在轿厢操纵面板、轿顶、底坑的对讲装置保持与机房及监控中心的语音联系（用户提供机房到监控室的电缆）。 The function is keep voice contact with machine room and monitoring center via talkback provided on car operation panel, car roof and pit. User provides cable from machine room to monitoring center.	●
层高自学习 Storey height self-learning	电梯楼层高度进行自动的学习。 Elevator automatically learns storey height.	●
绝对位置自定位 Absolute position self-establishment	每次断电恢复后，重新进行最大力矩点的绝对位置定位，确保电梯运行高效力矩状态。 After each power failure recovery, elevator re-establishes absolute position of max. torque point to ensure running in high-efficiency state.	●
机房安全配电箱 Safety distribution box in machine room	对电梯上电、断电进行控制并实现断上电锁功能，使维保人员有效控制电梯。对过载和短路进行保护。 The device controls connection and disconnection of power supply, and supports locking after disconnection of power supply. With the device, maintainer can effectively control elevator and protect elevator against overload and short circuit.	●
底坑检修梯 Pit servicing ladder	在底坑里方便维修人员进出的攀登梯。 Ladder is provided in pit for maintainer.	●
故障历史记录 / 查询 Fault recording/history inquiry	可记录 20 条最近的故障，包括发生时间、楼层、代码。 The latest 20 faults can be recorded, in aspects of time, floor and code.	●
轿顶检修功能 Servicing functions on car top	电梯轿顶设有检修箱，使检修维护更为安全快捷。 Servicing box is provided on car top, which makes servicing and maintenance safer and faster.	●
机房检修 Servicing in machine room	机房内进行检修运行操作。 Servicing can be carried out in machine room.	●
平层微调 Fine adjustment for leveling	当电梯平层略有差异时可以通过人工进行干预。 If there's slightly deflection in elevator leveling, manual intervention can be implemented with the function.	●
测试运行 Test run	这是为测试或考核新梯而设计的功能。将一体机某个参数设置为测试运行时，电梯就会自动运行。自动运行的总次数和每次运行的间隔时间都可通过参数设置。 The function is designed for testing or examining new elevator. Elevator can automatically run after some parameter of AIO is established as state of test running. Total times of automatic running and interval between runs can both be established by parameter setting.	●

全井道双控照明 Full-well double-control lighting	整个井道壁上安装等距的方式设置有双控照明。 Double-control lighting is provided by installing lamps through well wall.	●
厅门手动开门强制确认功能 Forced confirmation for hall door manual opening	当手动开门时，第一步只能够开一条缝，在您确认回关后才能彻底完全打开。 For manual opening, door first can only be opened by a seam, and can full open only if opening is confirmed.	○

升级 READY · Upgrade READY

特殊字母显示 Show of special letter	通过手持操作器可以设置每一层楼显示的字符，如设置地下一楼显示 'B' 等。 Character shown on each floor can be established via manipulator. For example, that shown on B1 can be established as B.	○
并联 Parallel connection	该功能用于两台同型号电梯成组控制时使用，能自动选择最合适的应答，避免电梯重复停梯，缩短乘客候梯时间，提高运行效率。 The function is for group control of 2 elevators of the same model, supporting automatic selection of the most proper response. It avoids repeated parking, shortens waiting time and improves running efficiency.	○

基本结构 · Basic structures

框架式箱体结构 Frame-type box	矩形高强度框架结构。 Rectangular high-strength frame structure.	●
弹性隔音轿厢体 Elastic soundproof car body	轿底有橡胶减震，降低井道内噪音传递到轿内。 On the bottom of car there's rubber that reduces vibration and noise transferred from well to car.	●
轿顶柔性弹簧减震 Flexible spring on car top for vibration reducing	轿顶反绳轮下端有螺旋型弹簧减震，吸收钢丝绳上各个频段震动，减少传递到轿厢内震动。 Below diversion sheave on car top, there's vibration-reducing helical spring that absorbs vibration in each frequency range on wire rope and reduces vibration transferred to car.	●
梁式门机安装 Installation of beam-type door operator	采用直梁安装，将门机传动与轿厢分离，降低了开关门噪音往轿厢内的传入。 Straight beam is involved for installation. This separates transmission on door operator from car and reduces transfer of noise from door opening/closing to car.	●

● 标准配置 Standard configuration

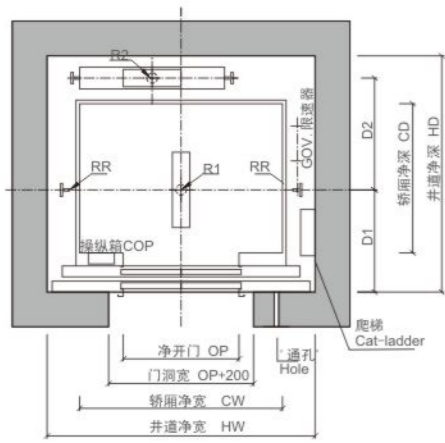
○ 选项配置 Options configuration

上述功能项仅适用于 UN-Victor T 标准配置的电梯。

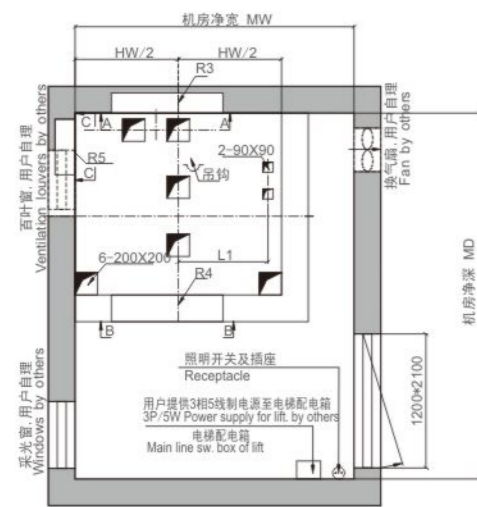
优耐德技术支持中心有最终解释权，如有变动按技术通知单执行。

有机房客梯土建图

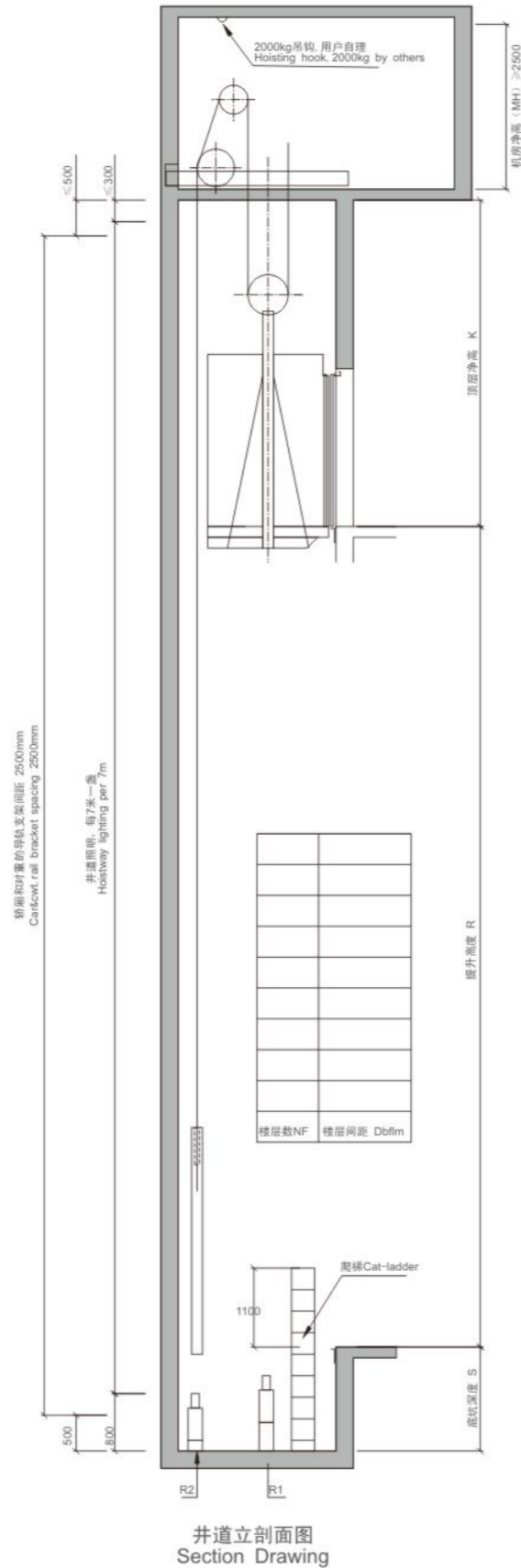
Civil drawing of machine-room cargo elevator



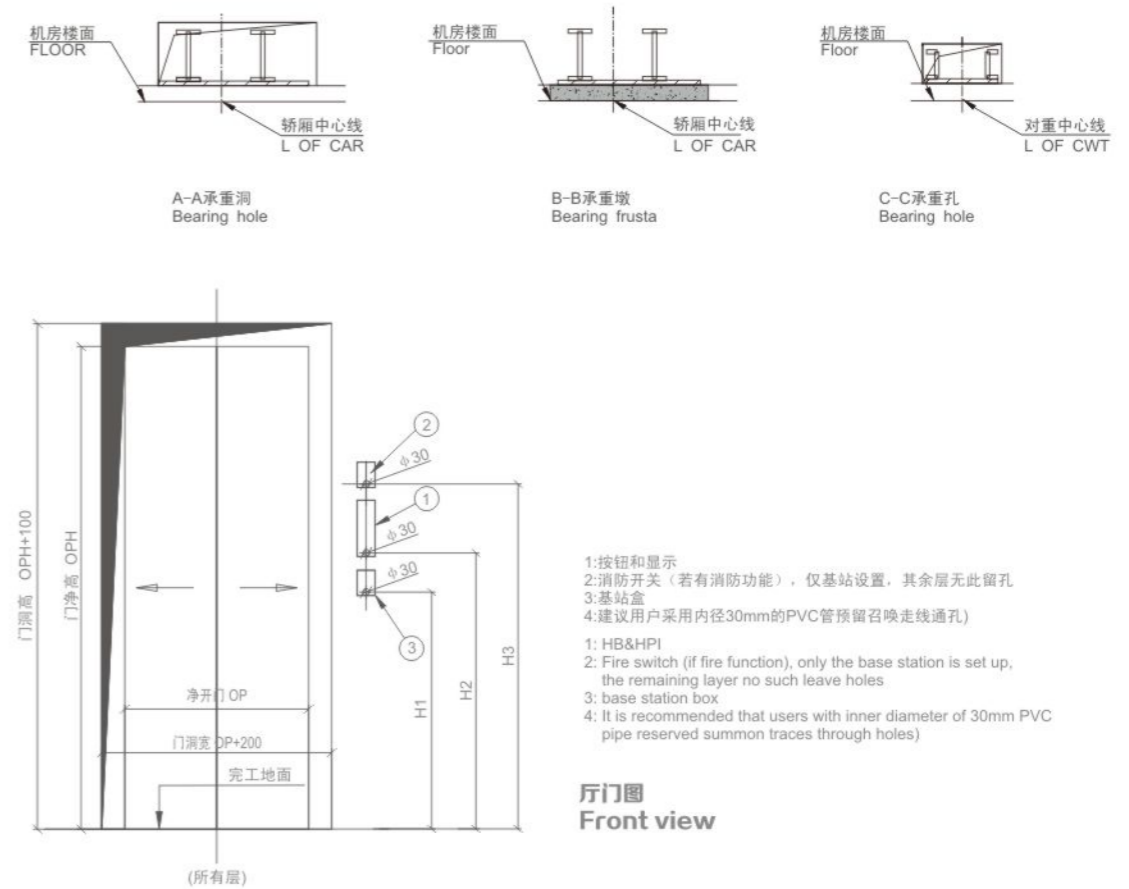
井道平面图
Hoistway plan



机房留孔图
Cutouts of machine room



井道立面图
Section Drawing



厅门图
Front view

- 1: 按钮和显示
 - 2: 消防开关 (若有消防功能), 仅基站设置, 其余层无此留孔
 - 3: 基站盒
 - 4: 建议用户采用内径30mm的PVC管预留召唤走线通孔
- 1: HB&HPI
 - 2: Fire switch (if fire function), only the base station is set up, the remaining layer no such leave holes
 - 3: base station box
 - 4: It is recommended that users with inner diameter of 30mm PVC pipe reserved summon traces through holes

载重(kg) Loading Capacity	速度(m/s) speed	轿厢净尺寸(mm) 宽(CW)×深(CD) Cabin size/net	净开门尺寸(mm) 宽(OP)×高(OPH) Open size	井道净尺寸(mm) 宽(HW)×深(HD) Hoist way size/net	机房净尺寸(mm) 宽(MW)×深(MD)×高(MH) Machine room/net	地坑深度 S/mm Pit	顶层高度X(mm) Overhead	最大层站数层 Max. Stop	最大提升高度(m) Max. rise	消防功能Fire Function	
										最大层站数(层) Max. Stop	最大提升高度(m) Max. rise
630	1	1400x1030	800x2100	1850x1700	2500x3350x2300	1350	4350	20	60	20	55
	1.5					1450	4450	32	105	28	80
	1.75					1550	4550	32	105	32	90
680	1	1400x1100	800x2100	1850x1700	2500x3350x2300	1350	4350	20	60	20	55
	1.5					1450	4450	32	105	28	80
	1.75					1550	4550	32	105	32	90
800	1	1400x1350	800x2100	1850x1950	2500x3350x2300	1350	4350	20	60	20	55
	1.5					1450	4450	32	105	28	55
	1.75	1550	4550	32	105	32	90				
	2.0	1850	5000	36	120	36	110				
	2.5	2050	5200	36	120	36	110				
900	1	1600x1300	900x2100	2150x2050	2800x3750x2500	1350	4350	20	60	20	55
	1.5					1450	4450	32	105	28	80
	1.75	1550	4550	32	105	32	90				
	2.0	1850	5000	36	120	36	110				
	2.5	2050	5200	36	120	36	110				
1000	1	1600x1400	900x2100	2050x2000	2700x3650x2300	1350	4350	20	60	20	55
	1.5					1450	4450	32	105	28	80
	1.75	1550	4550	32	105	32	90				
	2.0	1850	5000	36	120	36	110				
	2.5	2050	5200	36	120	36	110				
1150	1	2000x1350	1100x2100	2600x2100	3250x3750x2500	1400	4400	20	60	20	55
	1.5					1500	4600	32	105	28	80
	1.75	1600	4700	32	105	32	90				
	2.0	1850	5000	36	120	36	110				
	2.5	2050	5200	36	120	36	110				
1350	1	2000x1550	1100x2100	2600x2300	3250x3950x2500	1400	4400	20	60	20	55
	1.5					1500	4600	32	105	28	80
	1.75	1600	4700	32	105	32	90				
	2.0	1850	5000	36	120	36	110				
	2.5	2050	5200	36	120	36	110				
1600	1	2000x1750	1100x2100	2600x2500	3250x4150x2500	1400	4400	20	60	20	55
	1.5					1500	4600	32	105	28	80
	1.75	1600	4700	32	105	32	90				
	2.0	1850	5000	36	120	36	110				
	2.5	2050	5200	36	120	36	110				

注: 以上示例图仅供参考 Note: The above map is for reference sample

非电梯公司应完成的工作

WORK BY OTHERS LIFT



底坑 PIT

- 1、电梯的底坑必须防水防火，消防电梯的底坑必须有排水管道，管道口必须有防护装置。
- 2、底坑的底部应平整，并能承受图中的作用力。
- 3、多台电梯合用相通的电梯底坑时，每台电梯之间需设不低于2500的隔离金属网，金属网的网眼不大于75平方毫米。
- 4、在底坑较深，建筑结构允许的情况下，加设一个600宽800高的检修门，此门带安全开关，在底坑内不用钥匙就能打开，在外必须用钥匙打开，开门方向必须朝底坑外。
- 5、若底坑深度大于3000时，应设检修平台，具体要求安装时告知。
- 6、底坑下若有空间，在对重缓冲器的下方必须有坚实的立柱与大楼基础相连，并不允许有人 进入；若一定要进入，则底坑的地面除满足图示的作用力外，必须承受每平方米5000N的载荷，并且另外定购对重安全钳。
- 7、在底坑内提供一个220V单相3线15A的三眼和二眼插座。

1. The pit must be waterproof and fireproof and the pit of the fire fighting elevator must be installed a drainage pipeline with an installed protective device at terminal.
2. The bottom of the pit must be flat, and can bear the force stated on UNITE' layout.
3. If the pits are used for several elevators, there must be a separate metal-net higher than 2500mm installed between each elevator, the size of the mesh should be smaller than 75mm .
4. If the pit's depth is sufficient and the structure of the building is feasible, the hoistway should install a 600x1800(WxH) service-door equipped with safety switch. The door can be opened from inside of the pit without key, and should be opened only by the key from outside of the pit. The direction of opening is to the outside.
5. If the depth of the pit is more than 3000mm, there should be an inspection platform. The specific requirement will be informed during the installing stage.
6. If there is an empty space under the pit, there must be a substantial stud under the CWT's buffer configure to the building's foundation, and please forbid person to enter. (If there is a need to enter, the surface of the pit must be match the force requirement stated on UNITE' layout, and also should bear the load of 5000N/m (with the CWT safety.)
7. There should be a electric socket at 220V, 15A, 1phase, 3line of 2 prongs and 3 prongs.



井道 HOISTWAY

- 1、井道内的建筑物必须达到防火要求。
- 2、组成井道，机房，底坑的墙体的厚度必须大于150，以便安装时在墙体上固定联接件。
- 3、井道，底坑，机房内不得有与电梯无关的任何物件和孔洞。
- 4、井道必须垂直，且垂直误差0~+25mm/0~30m,0~+30mm/30m~60m,0~+50mm/60m以上。
- 5、井道应设置永久性照明装置在井道最高与最低500处各设一盏灯，中间适当位置设中间灯 即可，如果厅门全部关上，井道亦能被照亮。
- 6、井道若是砖墙结构时，应设混凝土圈梁，每台电梯的圈梁应同标高，圈梁的中心位置见图，厅门所在井道壁在门洞高度范围内不设圈梁。
- 7、厅门洞洞上沿应有一混凝土梁，梁高300，梁的长度同井道宽，梁必须同建筑结构连成一体，以固定厅门。
- 8、当相邻两层门地坎之间的距离超过11米时，其间应设置向井道外开启的带安全开关和锁的 宽600，高1800的安全门，此门在井道里不用钥匙也能打开。
- 9、建议井道在顶部和底部及中间每隔15米左右设通风口，通风口大小和位置双方商定，消防 电梯的通风口必须用管道引向安全处，通风口需加防护网。
- 10.所有井道入口处，在尚未安装厅门之前必须设置防护栅栏，详见“安装用厅门防护栅栏示意图”。

1. All the structures in the hoistway must be fire-proof.
2. The wall thickness of hoistway, machine room, and pit must be more than 150mm, for fixing connections to the wall during installation.
3. There should be not any objects or holes irrelevant to the elevator in hoistway, machine room, or pit.
4. The hoistway must be vertical. The vertical tolerance is0~+25mm/0~30m, 0~+30mm/30m~60m,0~+50mm(>60m).
5. The hoistway should set permanent lighting. The lowest light is 500mm up to the bottom of the pit. The highest light is 500mm below the top of the hoistway. Set lights at proper place in the middle of the hoistway. If all the doors are closed, the hoistway should be lighted clearly.
6. If the structure of the hoistway is brick, there should set the concrete circle beam. The detail position of the circle beam, please see UNITE' layout. The circle beam should not set across the door.
7. There should be a concrete beam over the hall door cutout. With the height of 300mm. The length of the beam is as same as the width of the hoistway. The beam should configure to the building structure to fix the hall door.
8. If the distance between the adjacent doors sill is more than 11m, there should set a 600*1800(W*H) safety door with safety lock and switch, which opened directly to the outside. This door can be opened inside the hoistway without the key.
9. Suggestion: please set a ventilation-cutout at the top and the bottom of the hoistway, and at every 15m in the hoistway. The ventilation-cutouts' size and positions are discussed by both sides. The ventilation cutout for fireman's lifts should be laid by piping to safety place, and set a protection mesh.
10. Prior to install the hall door, please set some protective guard at each entrance. For details, please see the schematic diagram of the protective guard for installing the hall door.



机房 MACHINE ROOM

- 1、机房入口必须宽敞，无杂物，并设永久照明和警示牌。
- 2、机房门不应小于土建图中标注尺寸，并向外开启。
- 3、机房应防尘，地板应防滑，并能承受每平方米6000N的均布载荷，机器梁的支撑点除外。
- 4、机房内应有安装电梯所需的预留孔和预埋件。
- 5、机房地面上与井道间的留孔的四周应砌50高的台阶。
- 6、机房地面上若有检修孔，则盖板在关闭后，在板的任意位置能承受2000N的作用力。
- 7、若主机和控制柜地板的落差大于500时，应设置永久性的平台楼梯，栏杆等设施，以便安装机房设备。
- 8、机房内每台主机的上方至少应有一个吊钩，或起重梁，并有符合规定的标志。
- 9、提供中央控制室的电梯运行状况的非合成显示信号（CCTV需特殊说明）均在机房进行交接。
- 10、机房应有温控设备，确保机房设备的温度5--40° C，相对湿度25° C时不超过85° C。
- 11、机房内设有固定式电气照明，地板表面上的照度不小于200LUX，照明电源应与□引机电源分开设置。
- 12、为方便电动工具的使用，机房内提供一个220V单相3线15A的三眼和二眼插座。
- 13、完工后机房地板与墙壁应进行防尘处理。
- 14、机房至少备有用于扑灭电气火灾的干粉灭火器。
- 15、机房局部抬高时，应设置护栏和台阶。

1. The entrance to the machine room should be spacious and not any sundries. Please set a permanent light and warning card.
2. The door of the machine room should be larger than 1200*2100(W*H), and opened directed to the outside.
3. The machine room should be dust-proof and slip-proof. It should bear the load as average 6000N/m□ (except the points of setting machine beams).
4. The machine room should set holes and pre-cast parts required for elevator installation.
5. There should set a step around each hole that connects the machine room to the hoistway on the floor.
6. In the machine room, if there is an inspection hole on the floor, when the hole is covered, the cover could sustain 2000N function at any (0.2*0.2)m□ .
7. If the drop height between machine and controller is more than 500mm, please set permanent stairs and handrails, etc for elevator installation.
8. There should be a hook or a derrick-beam on the top of the machine to install machine equipment, and set symbols which accord with the standard.
9. The signal of elevator running status connected to BMS (CCTV requirement should be explained as special) will exchange in machine room.
10. The machine room should set a temperature controller, to ensure the temperature of the machine room is 5--40°C, the relative humidity is not more than 85% at 25°C.
11. The machine room should set a fixed electric illumination; the luminance on the floor is not less than 200lux. The power for light and machine should be separated.
12. In order to use the electric tools, the machine room should set a 220V, 15A, 1phase, 3line, sockets of 3 prongs and 2 prongs.
13. After installation, the floor and the wall of the machine room should be treated to be dust-proof.
14. The machine room should set an air-extinguisher.
15. If partially raised, the machine room should set handrails and stairs.
16. User shall lay communication cable from machine room to duty room, which is RVVP5 * 0.75 five-core shield cable, and whose length can't be longer than 2000m.



电源 POWER

- 1、用户提供3相5线制电源至电梯配电箱。
- 2、每台电梯均应设置380V和220V两个有锁的带保护的电源开关，并应安装在机房入口处适当的相邻位置上，电压波动在±7%；380V的电源开关为交流，3相5线50Hz，额定电流和功率参照技术说明；220V的电源开关为交流，单相3线50Hz，额定电流为15A。
- 3、零线和接地线应分开，且不得安装熔断器。
- 4、应为每个机房留一个独立的接地端子，接地装置的接地电阻小于4欧姆。

1. Power supply should reach the machine room.
2. Each elevator should set 380V & 220V two locked protective power switches at proper place around the door of the machine room. The voltage fluctuation is power switch of 380V is AC, 3phase, 5line, 50Hz, rated current and power are referred to the technical description. The power switch of 220V is AC, 1phase, 3line, 50Hz and rated current is 15A.
3. Zero wire and earth wire should be separated, and forbid installing fuse.
4. Each machine room should set an independent port that connects to the earth. The electric resistance of this port is less than 4 ohm .



其他 OTHER

- 1、完成UNITE图纸上所有的建筑开孔和其他事项。
- 2、完成所有电梯安装完成后的土建回填和粉刷工作。
- 3、除上述外，与电梯有关的建筑设计应符合国家和地方有关电梯方面的规范GB7588-2003，GB10060-1993等。
- 4、若本条款与供货合同有冲突，以供货合同文本为准。

1. Please finish all the holes and other works stated on UNITE' layout.
2. Please finish all the works of paint and fill up after installation.
3. In addition to the above, the architectural design which refers to the elevator should be accord with the state and local standard, GB7588-2003, GB10060-93 etc.
4. If there is a conflict between the clause and the elevator contract, please accord with the elevator contract.

专业服务 尽在身边

Professional services around

便捷的服务网络：在全国重要城市设立多个售后服务点
Convenient service network: multiple after-sale service points established in major cities



标准的服务质量：
坚持“以人为本”的原则，
定期向一线服务团队提供技能、安全培训，
提升一线服务人员能力，打造优质服务团队。

400-826-1112
24小时服务热线

选择优耐德品牌服务
选择安全舒适的乘客体验
选择全球资深维保专家的技术
支持和优耐德多年行业声誉的保证

Select UNITE's service
Select safe and comfortable experience
Select technology provided by global senior maintenance expert
UNITE's years of reputation in the industry

3大解决方案

Three major solutions



维护保养解决方案

Maintenance

通过专业、全面的“预防为主，预检预修”的计划性电梯保养服务，保证电梯安全高效地运行，为客户的资产保值增值。

Professional and full scheduled elevator maintenance service centering “prevention first, servicing first” guarantees running in safe and high-efficiency way, and can keep value of and appreciate customer's property.



修理/升级解决方案

Repair/upgrade

经年累月的运转使电梯部件出现磨损，外观和功能也逐渐过时。优耐德修理/升级解决方案基于电梯现有配置，针对客户需求增设附属硬件或进行系统改良，提高电梯设备的安全性、可靠性、运行效率和舒适度，始终满足乘客期望。

Elevator component may be worn, and appearance and function may gradually get out-of-date upon years of running. Based on current elevator configuration, in UNITE's repair/upgrade solution, auxiliary hardware is added or system is improved as customer demand to improve safety, reliability, running efficiency and comfort and always meet passenger's expectation.



现代化更新解决方案

Modernization update

以最先进的现代电气控制系统取代老化过时的系统，同时保留有价值的机械部件。不需要新梯的费用，也不影响楼宇的正常运营，却呈现给您一部崭新电梯的价值

Out-of-date system is replaced with the most advanced modern electrical control system, meanwhile valuable key mechanical components are reserved. On the basis, value of brand-new elevator is brought without cost of new elevator or impact on normal operation of building.