

Service Line / 400-826-1112
服务热线

西子优耐德电梯有限公司 XIZI UNITE ELEVATOR CO., LTD.

- 地址/中国·杭州市临安经济开发区科技大道2329号
- Add/NO.2329 Science and Technology Av.,
Lin'an Economic Development Zone, Hangzhou, China
- [Http://www.uelevator.com](http://www.uelevator.com)

本书为一般信息出版物, 我们保留随时更改产品技术和说明的权利。
本书因印刷原因可能造成样本和实物有差异, 以实物为准。

This book is a publication of general information, and we reserve the right to alter the techniques and specifications of the products at any moment.

Regardless of their literary meaning or implications, no liabilities shall be undertaken for any words and sentences about applications and qualities of any products in this brochure, or for definitions and alterations of any articles and clauses in the purchase and sales agreements.



UN-1510

XIZI 西子电梯

VILLA ELEVATOR
UN-VILLA
—— 别墅梯 ——

XIZI 西子电梯

UN-VILLA 家用电梯

UN-VILLA HOME LIFT



UN-VILLA III 家用电梯系列产品适用于别墅、排屋等独栋住宅用户使用的电梯。UN-VILLA III 家用电梯应用新的轿架结构设计提高了井道利用率;特别是融合了全球技术领先的复合钢带技术、永磁同步无齿轮曳引技术、变频控制与同步带传动为一体的门机技术、电梯逻辑控制与变频驱动硬件为一体的控制技术,并在UN-VILLA II 原有的功能,增加一些人性化功能,UN-VILLA III 家用电梯是一款性能极高的家用电梯产品。

UN-VILLA III is used in villa, adopted new car structure design, combined the advanced belt gearless machine technology, Frequency conversion control and synchronous belt transmission technology for door operator, integrated logic control and VVVF drive, add more humanized function based on UN-VILLA II, is a high performance villa lift.

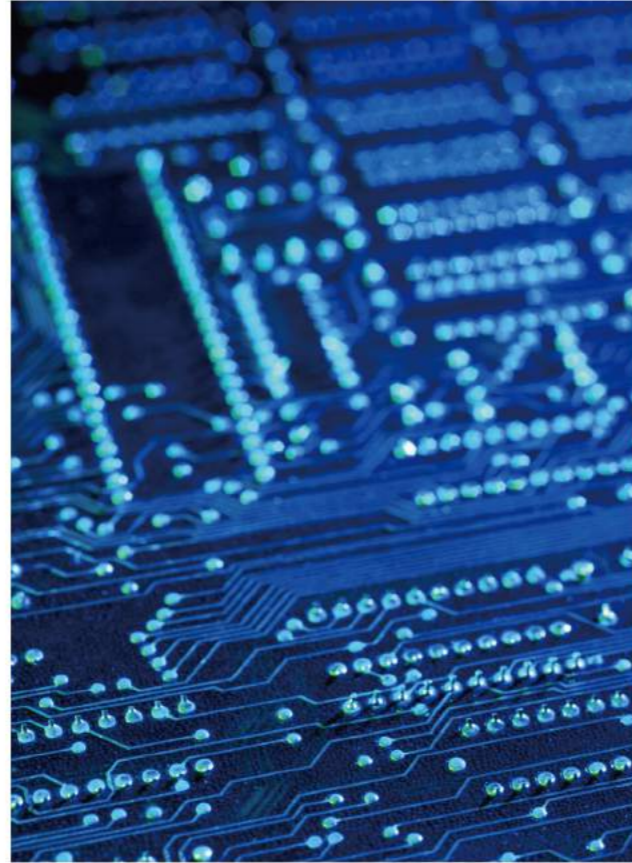
主要配置 MAIN CONFIGURATION

载重范围 Capacity	250-400kg
速度范围 Speed	0.3-0.4m/s
主机 Machine	GETM
控制柜 Controller	WISH 8500
门机 Door operator	永磁同步变频门机 PM VVVF door operator
最大提升 Max. Rise	12000mm
操纵箱 COP	CF1300
外召 HOP	ZY900
门保护 Door protection	光幕 Infrared curtain



UN-VILLA 家用电梯特点

UN-Villa HOME LIFT CHARACTERIES



产品特点 CHARACTERIES

UN-VILLA III 家用电梯: 降低顶层高度, 提高建筑空间的利用, 增加建筑师设计自由度。钢带新技术的应用, 大大降低了系统的噪音、振动, 增加柔韧性、牵引力, 安全性更高, 重量更轻, 使系统更节能; 钢带无需润滑解决了150年来无法避免的井道油污问题, 使电梯在绿色环境中运行。永磁同步无齿轮曳引机, 模块化控制, 以及稳定可靠的门机系统, 共同打造卓越运行品质。更加适用于别墅、排屋等独栋住宅, 带来更高、更好、更强的承载体验。

UN - VILLA III home elevator: lower overhead, increase the use of architectural space, increase the architect design degrees of freedom. Steel belt of the new technology application, greatly reduces the noise and vibration in the system, increases the flexibility, traction, safer, lighter weight, make the system more efficient; Steel belt without lubrication solved the shaft oil pollution problem over 150 years, is running in the elevator in the green environment. Gearless permanent magnet synchronous machine, modular control, stable and reliable door machine system, to create excellent quality. Is more suitable for villas, row houses such as single-family homes, higher, better, stronger carrying experience.

控制柜 CONTROLLER

U-Wish 8500控制系统: 采用高度集成的一体化主板作为电梯控制系统的核心, 利用高可靠性的RSL通讯系统, 将电梯的各个部件紧密的连在一起。驱动部分则采用高精度的矢量变频技术, 实现电梯运行直接停靠, 使电梯的运行更加平稳舒适, 运行效率更高, 同时其简洁精巧的外观设计也更有利于安装布置。

U - WISH8500 control system: adopting the integration of highly integrated motherboard as the core of the elevator control system, with high reliability of the RSL communication system, the elevator parts tightly together. Driving part adopts vector frequency conversion technology of high precision, realize the landing directly, make the elevator running more smooth and comfortable, higher operation efficiency, and at the same time its concise compact appearance also more conducive to actual installation.

钢带主机 BELT MACHINE

UN-VILLA III 家用电梯采用永磁同步无齿轮钢带曳引主机, 取消传统主机的减速箱, 并将同轴传动技术和先进的矢量变频控制技术相结合, 这不但极大地降低了机械能耗, 提高了传动效率, 而且节约了使用空间, 同时还消除了蜗轮蜗杆传动引起的噪音和振动, 使电梯的运行更加安静。减速箱的取消还使主机运行不需要润滑, 使电梯的运行环境更清洁环保。

UN - VILLA III home elevator using permanent magnet synchronous gearless steel belt traction machine, cancel the traditional reducer, coaxial transmission technology and advanced vector frequency conversion control technology, which not only greatly reduces the power consumption, improve the transmission efficiency, and saves space to use, but also eliminate the transmission of noise and vibration, to make the elevator running more quiet. The cancellation of the reducer also makes machine do not need lubrication operation, make the elevator running environment more clean and environmental protection.



主要优势 MAIN ADVANTAGES

驱动轮和电机轴杆为一体设计, 主机体积小、重量轻
Driving wheel and motor shaft lever integration of design, the machine is small size, light in weight

制动器集成在电机中, 减小了主机制动噪音
Brake integration in motor, reduced the brake noise

采用碟型制动器免维护
The disc type brake maintenance free

采用封闭式轴承, 无需润滑
The close bearing without lubrication

主机效率可达95%
Machine efficiency can reach 95%

主机轮终身不磨损
Machine wheel not ever wear

复合钢带 COMPOSITE STEEL BELT

聚氨酯层代替了传统钢丝绳的亚麻芯, 将重新排布的钢丝绳股包裹, 起到防止腐蚀和磨损的作用。复合钢带与传统钢丝绳相比, 无需油润滑, 解决了150年来无法避免的井道油污问题, 使电梯在绿色环境中运行。

Polyurethane coating instead of the traditional wire rope flax core, will rearrange strand wire package, to prevent corrosion and wear. Composite steel belt compared with the traditional steel wire rope, without oil lubrication, solved in 150 years could not avoid the shaft of oil pollution, make the elevator running in the green environment.



主要优势 MAIN ADVANTAGES

高科技、新型耐磨材料组成
The high-tech, new wear resistant materials

高分子材料外层覆盖, 封闭结构, 无腐蚀和渗油
Polymer coating, closed structure, no corrosion and oil leakage

比普通钢丝绳轻近20%, 搬运、安装方便
Nearly 20% lighter than the ordinary steel wire rope, handling, installation is convenient

复合钢带终生免维护
Composite steel belt free maintenance for life

无需油润滑
Without oil lubrication

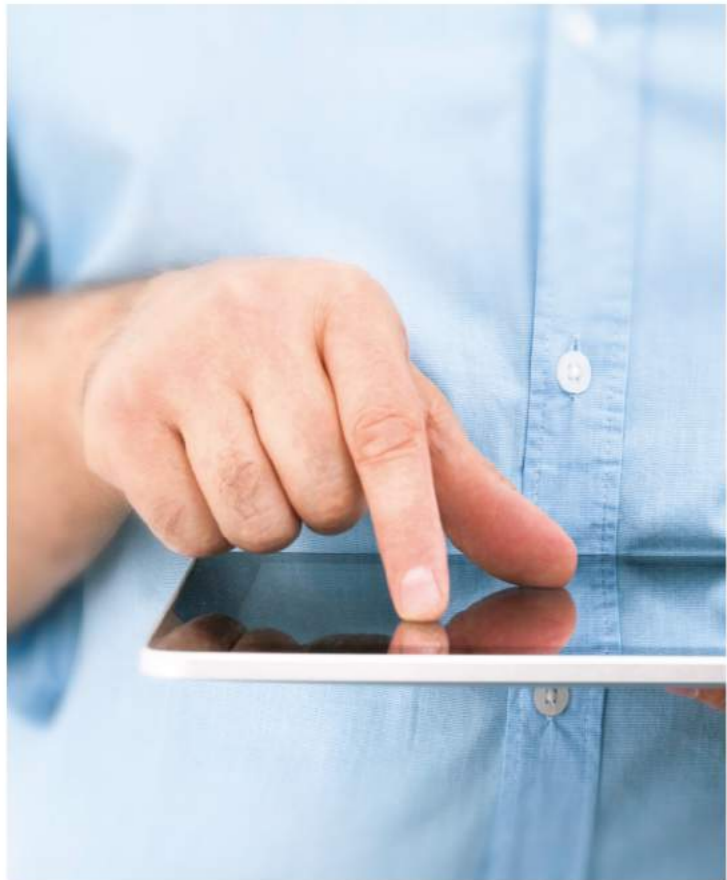


高效节能的主机系统

HIGH EFFICIENCY AND ENERGY SAVING OF THE MACHINE SYSTEM

专业针对高端别墅市场及其他私人会所的无机房家用曳引梯，采用了单相AC220V电源，运行功率约3kw，提高了建筑井道利用率，采用的轻巧型永磁同步无齿轮曳引机，无液压结构漏油污染，大大的节约了空间，也降低了电梯运行噪音和振动。

Specialized in high-end villa market and other private clubs machine roomless home traction elevator, used the single AC220V power, operating power 3 kw, improving the utilization rate of shaft building and using lighter type of permanent magnet synchronous gearless traction machine, no hydraulic structure oil pollution, greatly saves the space, also reduces the noise and vibration of elevator running.



安全智能的控制系统

SAFE AND INTELLIGENT CONTROL SYSTEM

智能化微电脑模块综合计算各种信号，安全可靠。变频变压驱动系统与滚动、滑动复合式导轨使电梯加减速及运行过程平稳，超低噪音营造宁静生活。

Intelligent integrated computation signals for computer module, safe and reliable. Frequency conversion variable driving system and rolling, sliding composite guide shoes make elevator deceleration and smooth running, low noise create a quiet life.



全面可靠的保护系统

COMPREHENSIVE AND RELIABLE PROTECTION SYSTEM

即时对讲系统可实现3方通话（电梯轿厢、电梯控制机房、管理中心），实现紧急通讯。轿厢配置的应急照明系统能保证轿厢内亮度，避免黑暗中感到恐惧，并且在停电时电梯能自动平层开门，实现自动救援。轿厢采用钢板、不锈钢、耐火木板等防火材料，即美观又安全。

Instant intercom can realize three parties communication (elevator car, elevator machine room, management center), ensuring the emergency communications. Car configuration of emergency lighting system can ensure the brightness in the cabin, avoid fear of the darkness, and the elevator during power off can automatic leveling to open the door, automatic rescue. Cabin in fire prevention materials such as steel plate, stainless steel, fireproof board, beautiful and safe.

UN-VILLA 家用电梯 轿厢装潢

UN-VILLA HOME LIFT DECORATION



标准配置 STD CONFIGURATION

标准配置 Std configuration	U-CR008
吊 顶 Ceiling	钢板喷漆(珠光金) Painting steel (golden)
轿 壁 Car panel	钢板喷漆(珠光金) Painting steel (golden)
地 坪 Floor	PVC

*实物与样本颜色有一定色差,以实物为准
Actual and the sample color have color difference, in kind prevail

人机界面 HUMAN INTERFACE

操纵箱&召唤:采用镜面不锈钢边框,亚克力面板,亚克力选材通过20多种材质匹配而成,独一无二的顶级材料亚克力,并采用特殊切割工艺,整个面板制作多达近10道工序,整体搭配设计,展现别墅梯旗舰等级。

COP&HOP: the mirror stainless steel frame, acrylic panel, acrylic material by more than 20 material matching, unique acrylic top material, and the use of special cutting process, the entire panel made up to about 10 process, overall design collocation, presenting villa elevator flagship level.

召唤 HOP

点阵显示, 不锈钢圆按钮 Dot display, st. steel round button

标 准 Std U-ZY900

显示器 Display 2.9寸点阵 2.9" dot display

面 板 Panel 亚克力面板+镜面不锈钢边框 The acrylic panel+mirror st. steel frame

操纵箱 COP

4.3"液晶显示, 不锈钢圆按钮 4.3" LED display, stainless steel, Round button

标 准 Std U-CF1300

显示器 Display 4.3TFT液晶 4.3 TFT

面 板 Panel 亚克力面板+镜面不锈钢边框 The acrylic panel+mirror st. steel frame



召唤
HOP

操纵箱
COP





U-CR103

吊顶: 镜面不锈钢镀钛金+亚克力+筒灯
 Ceiling: Mirror St.St. plating titanium +Acrylic+downlight

后壁: 镜面不锈钢蚀刻镀钛金
 Rear Wall: Mirror etched St. St. plating titanium

侧壁: 镜面不锈钢蚀刻镀钛金+贴塑钢板
 Side Wall: Mirror etched St.St. plating Titanium+ steel plate

前壁: 镜面不锈钢镀钛金
 Front Wall: Mirror St.St. plating titanium

扶手: 镜面不锈钢圆管
 Handrail: Mirror St.St. Pipe

地坪: PVC
 Floor: PVC



注: 轿厢装饰不包含轿门、操纵箱和召唤盒。墙纸图案以实际选购为准, 效果图仅供参考。

Note: Cabin decoration didn't include car door, COP and LOP. Wallpaper images will be subject to actual purchase, renderings are for reference only.



U-CR104

吊顶: 烤漆钢板+透光云石+筒灯
Ceiling: Painted steel+Translucent Marble+ downlight

后壁: 镜面不锈钢蚀刻镀玫瑰金
Rear wall: Mirror St.St. etching rose golden face

侧壁: 镜面不锈钢蚀刻镀玫瑰金+短发纹不锈钢镀玫瑰金
Side wall: Mirror St.St. etching rose golden face+ hairline St. St. etching rose golden face.

前壁: 短发纹不锈钢镀玫瑰金
Front wall: Hairline St.St. etching rose golden face

扶手: 镜面不锈钢圆管
Handrail: Mirror St.St. Pipe

地坪: PVC
Floor: PVC



注: 轿厢装饰不包含轿门、操纵箱和召唤盒。墙纸图案以实际选购为准, 效果图仅供参考。

Note: Cabin decoration didn't include car door, COP and LOP. Wallpaper images will be subject to actual purchase, renderings are for reference only.





U-CR105

吊顶: 烤漆木边框+银箔+暗藏灯
 Ceiling: Painted Wooden Frame +silver foil + Hidden light

后壁: 烤漆木饰面+白镜面嵌条+装饰壁纸(以实物为准)
 Rear Wall: Painted Wooden face+White Mirror Slug+ decoration paper(subject to actual decoration)

侧壁: 烤漆木饰面
 Side Wall: Painted wooden finish

前壁: 白镜面不锈钢
 Front Wall: White Mirror St.St.

地坪: 大理石
 Floor: Marble



注: 轿厢装饰不包含轿门、操纵箱和召唤盒。墙纸图案以实际选购为准, 效果图仅供参考。

Note: Cabin decoration didn't include car door, COP and LOP. Wallpaper images will be subject to actual purchase, renderings are for reference only.



U-CR106

吊顶: 烤漆钢板+透光云石+筒灯
Ceiling: Painted steel+Translucent Marble+ downlight

后壁: 镜面不锈钢蚀刻镀玫瑰金
Rear wall: Mirror St.St. etching rose golden face

侧壁: 镜面不锈钢蚀刻镀玫瑰金+短发纹不锈钢镀玫瑰金
Side wall: Mirror St.St. etching rose golden face+ hairline St. St. etching rose golden face.

前壁: 短发纹不锈钢镀玫瑰金
Front wall: Hairline St.St. etching rose golden face

地坪: PVC
Floor: PVC



注: 轿厢装饰不包含轿门、操纵箱和召唤盒。墙纸图案以实际选购为准, 效果图仅供参考。

Note: Cabin decoration didn't include car door, COP and LOP. Wallpaper images will be subject to actual purchase, renderings are for reference only.





U-CR107

吊顶: 烤漆木框架+暗藏灯+LED射灯
Ceiling: Painted Wood Frame+Hidden light+LED light

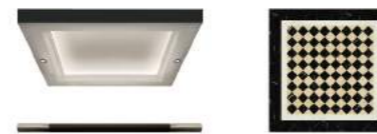
后壁: 造型烤漆木板+仿古镜
Rear wall: Painted wood plate+Antique mirror

侧壁: 造型烤漆木板+装饰画
Side wall: Painted Wood+Decoration Picture

前壁: 镜面不锈钢
Front wall: Mirror St.St.

扶手: 两端镜面不锈钢+中间深色烤漆木管
Handrail: Mirror St.St. on two sides+Dark painted Woodwind in middle

地坪: 大理石
Floor: Marble



注: 轿厢装饰不包含轿门、操纵箱和召唤盒。墙纸图案以实际选购为准, 效果图仅供参考。

Note: Cabin decoration didn't include car door, COP and LOP. Wallpaper images will be subject to actual purchase, renderings are for reference only.



U-CR108

吊顶: 烤漆木板+镜面不锈钢嵌条+射灯
Ceiling: Painted wood + mirror st.st. slug + downlight

后壁: 木线条边框+车边镜+装饰油画
Rear Wall: Wooden slug + mirror st.st. + decoration painting

侧壁: 烤漆木板
Side Wall: painted wood

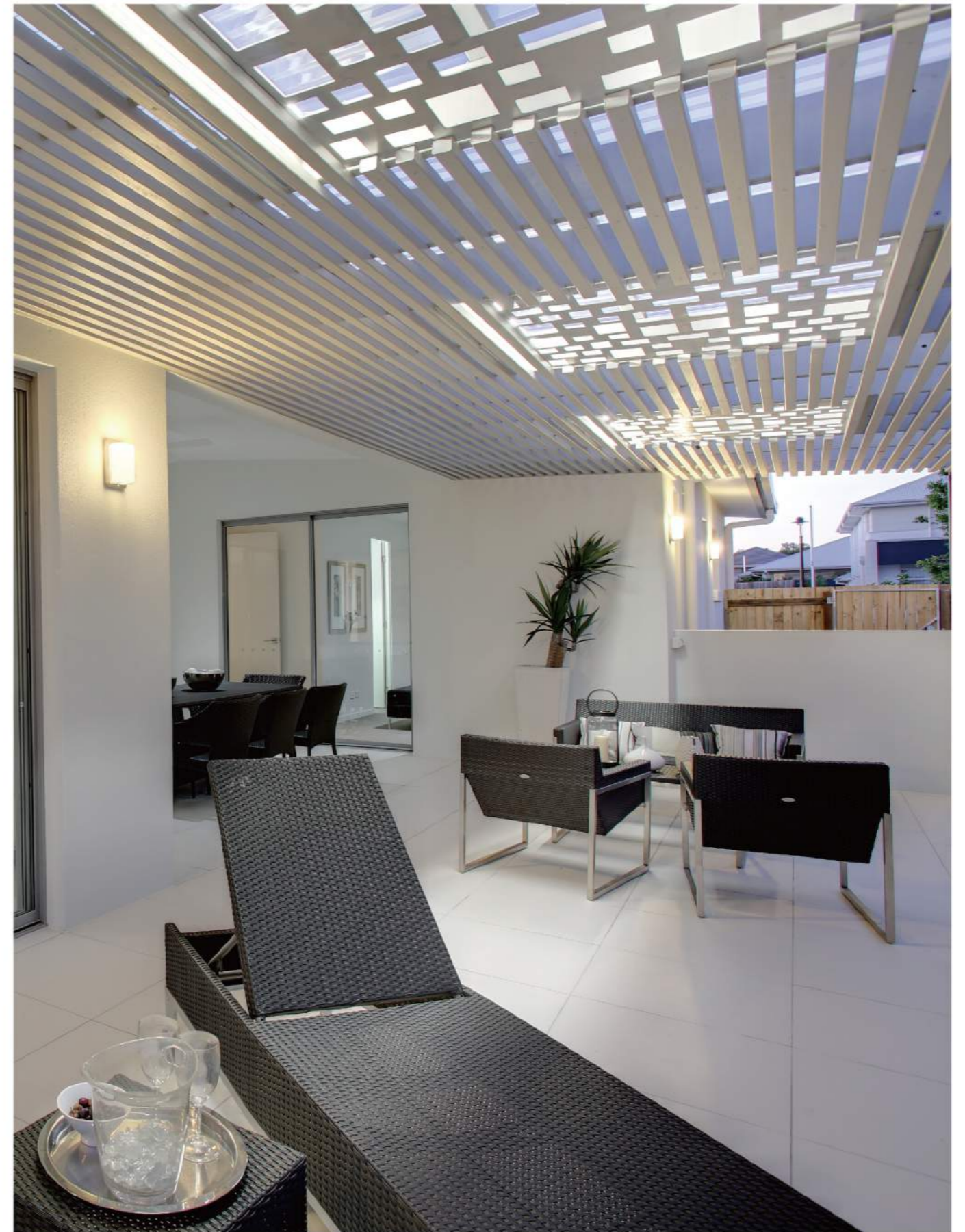
前壁: 镜面不锈钢
Front wall: Mirror St.St.

地坪: 大理石
Floor: Marble



注: 轿厢装饰不包含轿门、操纵箱和召唤盒。墙纸图案以实际选购为准, 效果图仅供参考。

Note: Cabin decoration didn't include car door, COP and LOP. Wallpaper images will be subject to actual purchase, renderings are for reference only.



UN-VILLA 家用电梯功能表

UN-VILLA HOME LIFT FUNCTION LIST

功能名称 Function	功能描述 Description	备注 Note
全集选 FCL-Full Collective Operation	在自动状态或司机状态, 电梯在运行过程中, 在响应轿内指令信号的同时, 自动响应上下召唤按钮信号, 任何楼层的乘客, 都可通过登记上下召唤信号召唤电梯。 In automatic or attendant service, the elevator in the process of operation, in response to a command signal in the car at the same time, response to the call button up and down signal automatically, any passenger can call the elevator through registering up and down call.	●
检修运行 Inspection Running	这是在检修或调试电梯时使用的操作功能。当符合运行条件时, 按上/下行按钮可使电梯以检修速度点动向上/向下运行, 持续按下按钮, 电梯保持运行, 松开按钮即停止运行。 Up/down running in inspection speed. The elevator keep running by push on the button and stop when loosen the button.	●
直接停靠 Directly Parking	以距离为原则, 自动运算生成从启动到停车的平滑曲线, 没有爬行, 直接停靠在平层位置。 With distance for the principle, automatic operation generated from start to stop a smooth curve, no creep, parked in the flat position directly.	●
自救平层运行 Auto rescue running	当电梯处于非检修状态下, 且未停在平层区, 此时只要符合启动的安全要求, 电梯将自动以慢速运行至最近平层区, 然后开门。 When the elevator is not in maintenance mode, and did not stop on the leveling area, when meeting the safety requirements, the elevator will automatically run at slow to a leveling area recently, and then open the door.	●
紧急救援运行 Emergency rescue running	对于人力操作提升装有额定载重量的轿厢所需力大于400N的电梯驱动主机, 设置紧急电动运行开关及操作, 以替代手动盘车装置。 When manual winding required over 400N, set up the emergency electric operation switch and operation, to replace manual winding.	●
电机参数自学习 Motor parameter self learning	系统在首次运行前对电机参数进行自学习。 Self learning the motor parameters when the system is first running.	●
井道参数自学习 Shaft parameters self learning	系统在首次快车运行前, 需要对井道的参数进行自学习, 包括每层的层高、强迫减速开关位置。 First normal running, the system need self learning about the shaft parameters, including each floor height, the position of deceleration switch.	●
自动返基站 Automatic return to main landing	当超过设定时间, 仍无内部指令和层站召唤时, 电梯自动返回基站等候乘客。 When there is no order or calls, after a period of time the elevator will automatic return to the main landing.	●
关灯节电功能 FLP-Fan and light protection	当超过设定时间, 仍无内部指令和层站召唤时, 则自动切断轿厢内照明、风扇等电源。 Elevator will enter energy saving mode under no operation, turn off the car light and fan automatically within present time after door closing.	●
前后门服务楼层设置 Front and back opening setting	系统可根据需要分别对前门和后门选择服务楼层。 The system can set the front or back opening according to requirement.	●
服务楼层设置 Service floor setting	系统可根据需要灵活选择关闭或激活某个或多个电梯服务楼层及停站楼层。 The system can set the service floor according to requirement.	●
自动修正轿厢位置 Automatic correct the position of cabin	电梯每次运行到端站位置, 系统自动根据第一级强迫减速开关检查和修正轿厢的位置信息, 同时辅助特制的强迫减速速度彻底消除冲顶和蹲底故障。 Elevator run to the end station every time, the system will check and correct the position of cabin automatically according to the first forced deceleration switch, and auxiliary special forced deceleration to eliminate the fault of overrunning.	●
跳跃层楼显示 Floor display	灵活定义厅外显示控制板显示内容, 可以根据需要设置显示为非连续数据。 The floor display can be discontinuous floor according to requirement.	●
反向自动消号 Automatic elimination of reverse command	当电梯运行到终端层站或者运行方向变更时, 将此前所登记的反向指令全部自动取消。 When the first or last landing is reached and elevator has to reverse, all commands originally registered will be eliminated.	●
开关门故障保护 Open and close fault protection	当检测到开关门超过设定次数后仍未有效关门, 系统将停止开关门并输出故障。 When open and close over setting times still not effective, the system will stop opening or closing and show faulty.	●
保持开门时间的分类设定 Opening keep time setting separately	系统根据设定的时间自动判断召唤开门、指令开门、门保护开门、延时开门等不同的保持开门时间。 The system will judge the opening keep time of calling opening, order opening, protection opening, delay opening through the setting time.	●
贯通门独立控制 Independent control of through opening	使用贯通门时, 可分别单独控制前后门。 Independent control of front or back door when through opening	●
强迫减速监测功能 Forced deceleration detection	系统在自动运行模式下, 根据强迫减速开关位置, 以及开关动作情况来监测、校正电梯轿厢的位置。 Under auto running, the system will detect and correct the position of cabin according to the position of forced deceleration switch and the operation situation of switch.	●
开门按钮门区开门 Open button	电梯停在门区时, 可以在轿厢中按开门按钮使电梯已经关闭或尚未关闭的门重新打开。 When elevator stop in door zone, can reopen the door through open button in cabin	●
本层厅外开门 Open in landing	在无其它指令或外召的情况下, 若轿厢停靠在某一层站, 按下该层站外的召唤按钮后, 轿厢门自动打开。 When there is no call or order, the cabin stop in one floor, push the call box in landing, the door will be automatically open.	●

重复关门 Re-closing	电梯持续关门一段时间后, 若门尚未关闭, 则电梯自动开门, 然后重复关门。 If the door lock not closed after the door keep closing for a period of time, the elevator will automatically open door, and re-closing.	●
满载直驶 LNS-Load non stop	在自动无司机运行状态, 当轿内满载时(一般为额定负载的80%), 电梯不响应经过的厅外召唤信号。 When car is loaded to a predetermined percentage of its capacity (normally it's 80%), it is considered "full". The car will bypass further hall calls.	●
超载保护 LWS-overload protection	保证轿厢运行时的速度在安全控制范围内, 以保证乘客的安全。 If the load exceeds the rate load, the sound signal will be given out by speaker, and "OVERLOAD" will be displayed, the car door will not close, the elevator will not start.	●
防打滑保护 Anti-slip protection	在非检修状态, 电梯运行过程中, 如果连续运行了F9-02规定的时间(最大45秒)后, 而且没有平层开关动作, 系统就认为检测到钢丝绳打滑故障, 所以就停止轿厢一切运行。 In the state of no maintenance, elevator running process, if the continuous operation over the stipulated time of the F9-02 (maximum 45 seconds), and there is no leveling switch action, the system think rope slipping fault is detected, so they stop all running of cabin.	●
接触器触点检测保护 Contactor detection protection	电梯在运行或者停止状态下, 检测到接触器的啮合状态异常时, 系统自动保护。 When elevator is running or stop, if the contactor is detected abnormal, the system will automatically protect.	●
电机过电流保护 Motor over-current protection	检测到电机的电流大于最大允许值时, 系统自动保护。 The system will auto protect if detected the motor current over the max. allowed data.	●
电源过电压保护 Motor over voltage protection	检测到电源电压大于最大允许值时, 系统自动保护。 The system will auto protect if detected the motor voltage over the max. allowed data.	●
电机过载保护 Motor over load protection	检测到电机过载, 系统自动保护。 The system will auto protect if detected the motor overload.	●
编码器故障保护 Encoder faulty	全系统只使用一个高速编码器来进行闭环矢量控制, 如果该编码器发生故障, 系统自动停机, 杜绝因无法得知编码器故障引起的冲顶蹲底的故障。 Only one high-speed encoder for closed-loop vector control is used in system, if the encoder failure occurs, the system automatically shut down, prevent due to unknown encoder failure caused overrunning failure.	●
故障历时记录 Fault record	系统具有6个故障记录, 包括故障产生的时间与楼层等信息。 The system will records 6 faults, including the time and floor information of the fault.	●
称重信号补偿 Weighing signal compensation	系统可以在高端应用场合中使用称重信号, 对电梯的启动运行补偿。 System can use weighing signal in special application, to compensate the starting.	●
预转矩设置 Pre-torque setting	系统可预先输出与相应负载匹配的转矩, 以保证电梯的舒适度。 System can be output in advance with the corresponding torque load matching, to ensure the comfort of the elevator.	●
门锁短接检测 Short detection of door lock	电梯在自动运行模式下, 每次开门到位置均识别门锁是否存在异常。 Under auto running, it will detect whether the door lock is abnormal during every door opening.	●
测试运行 Test running	测试运行包括新电梯的疲劳测试运行, 禁止外召响应, 禁止开关门, 屏蔽端站限位开关, 屏蔽超载信号等测试运行方法。 Including fatigue test run of the new lift, prohibit called response, prohibit open close the door, blocking end station limit switch, shielding overload signal etc. test methods.	●
一键求救功能 One key for help	通过操纵箱上通话按钮, 对控制柜对讲主机进行呼叫, 当无应答时, 对讲主机将自动向依次设置好的3组电话号码(或手机)进行拨号, 直到接通为止。 The communication button in COP will call the master phone in controller first, if no answer, it can dial to 3 setting numbers in turn, until it's connected.	○

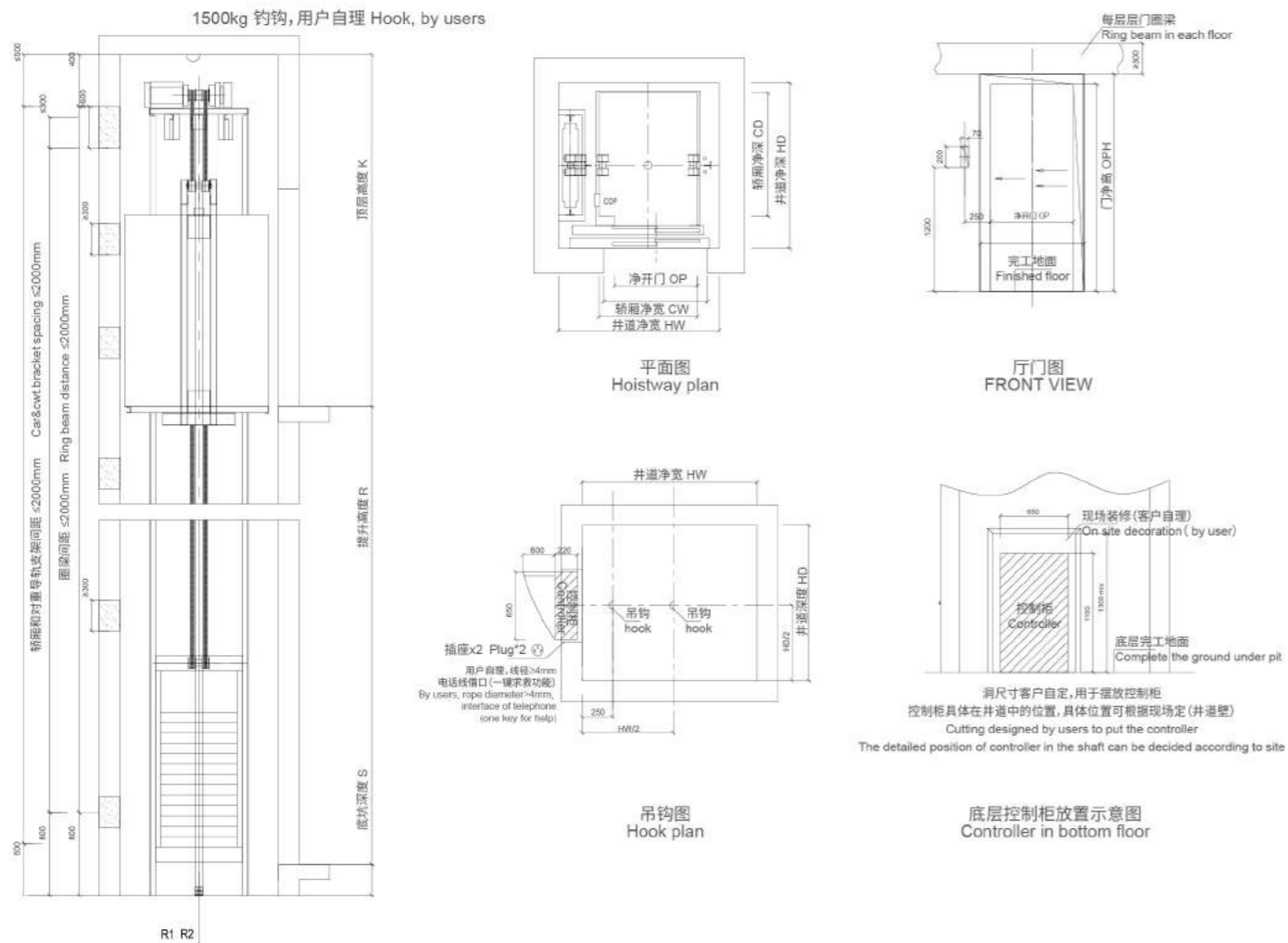
上述功能项仅适用于UN-Villa 标准配置的电梯。Above function only apply to std. UN-Villa elevator.

● 标准配置 STD ○ 选项配置 OPTION

UN-VILLA 家用电梯 土建图

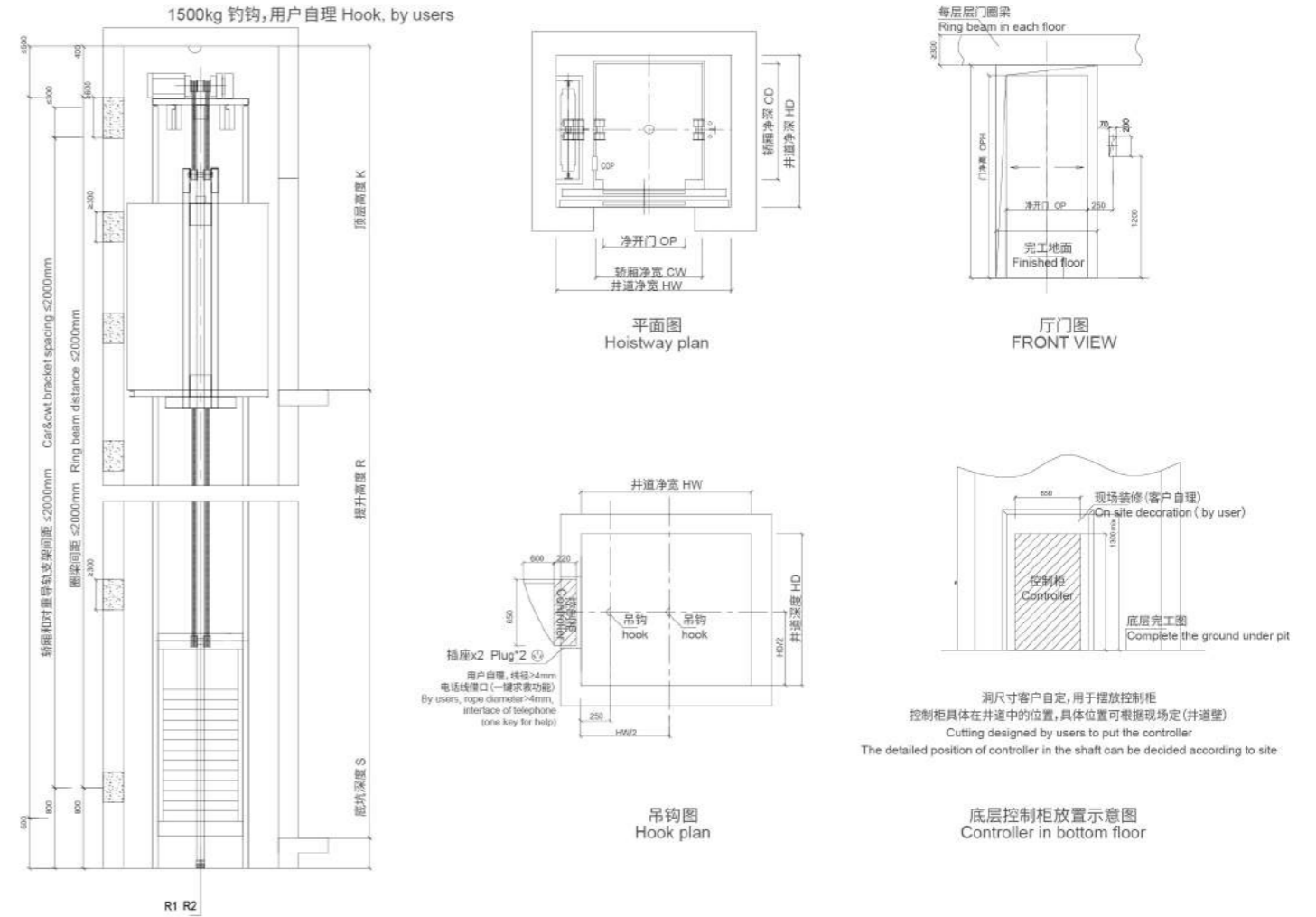
UN-VILLA HOME LIFT LAYOUT DRAWING

UN-VILLA III 土建图 LAYOUT DRAWING 自动旁开门 SIDE OPENING



载重Q Capacity	速度V Speed	井道净尺寸 Shaft clear dimension	轿厢净尺寸 Car clear dimension	开门尺寸 Opening size	顶层高度K Overhead	底坑深度S Pit depth	底坑反力 Pit reaction	最大层站数 Max. stops	最大提升高度R Max. rise
(KG)	(m/s)	宽HWx深HD (mm)	宽CWx深CD (mm)	宽OPx高OPH (mm)	(mm)	(mm)	R1(KN) R2(KN)	(层)	(m)
250	0.4	1450X1400	850X990	旁开门700X2000	≥3400	≥320	41.6 33.6	5	12
320		1550X1500	950X1090	旁开门800X2000					
400		1550X1600	950X1190	旁开门800X2000					

UN-VILLA III 土建图 LAYOUT DRAWING 自动中分门 CENTRE OPENING

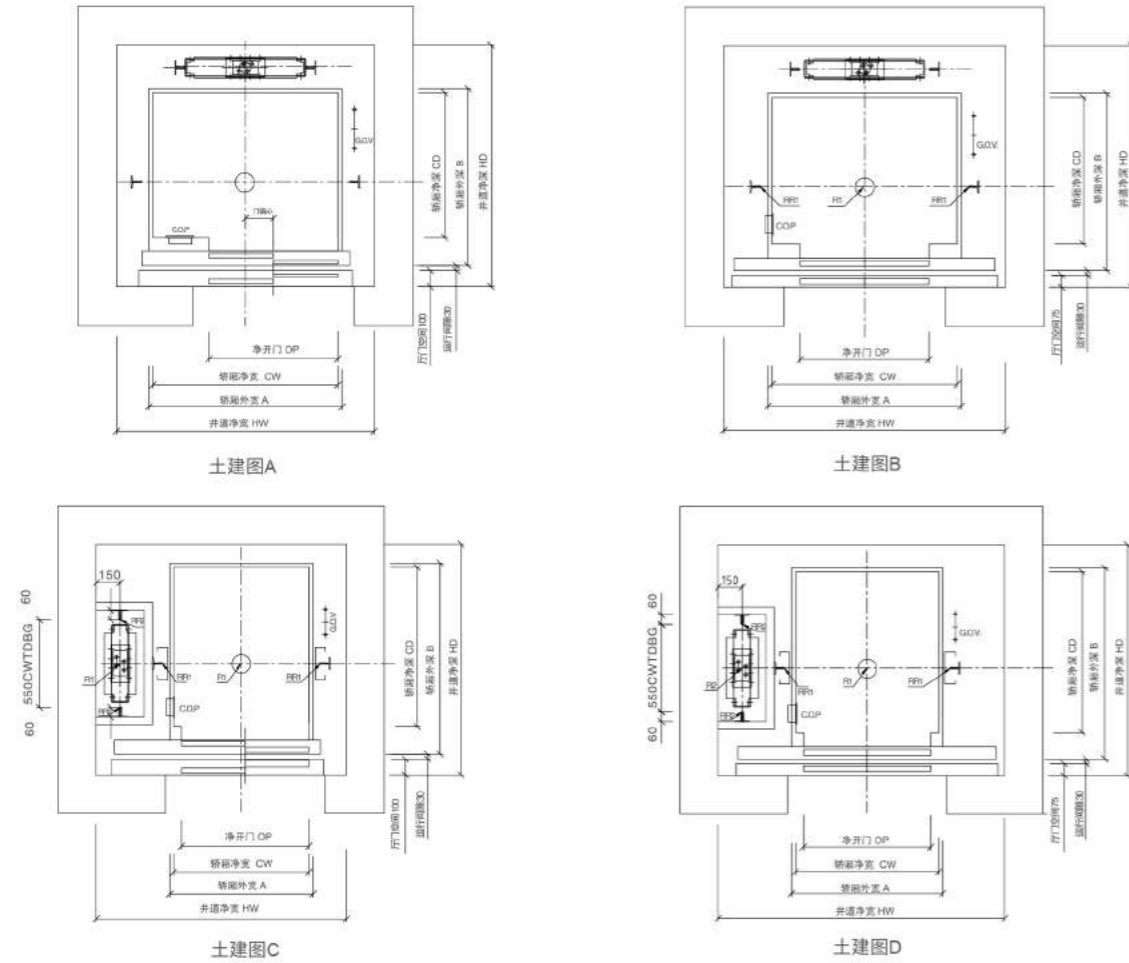


载重Q Capacity	速度V Speed	井道净尺寸 Shaft clear dimension	轿厢净尺寸 Car clear dimension	开门尺寸 Opening size	顶层高度K Overhead	底坑深度S Pit depth	底坑反力 Pit reaction	最大层站数 Max. stops	最大提升高度R Max. rise
(KG)	(m/s)	宽HWx深HD (mm)	宽CWx深CD (mm)	宽OPx高OPH (mm)	(mm)	(mm)	R1(KN) R2(KN)	(层)	(m)
250	0.4	1625x1400	950x1050	中分门700X2000	≥3400	≥320	41.6 33.6	5	12
320		1725X1450	1000X1100	中分门800X2000					
400		1725X1500	1050X1150	中分门800X2000					

UN-VILLA 家用电梯 土建图

UN-VILLA HOME LIFT LAYOUT DRAWING

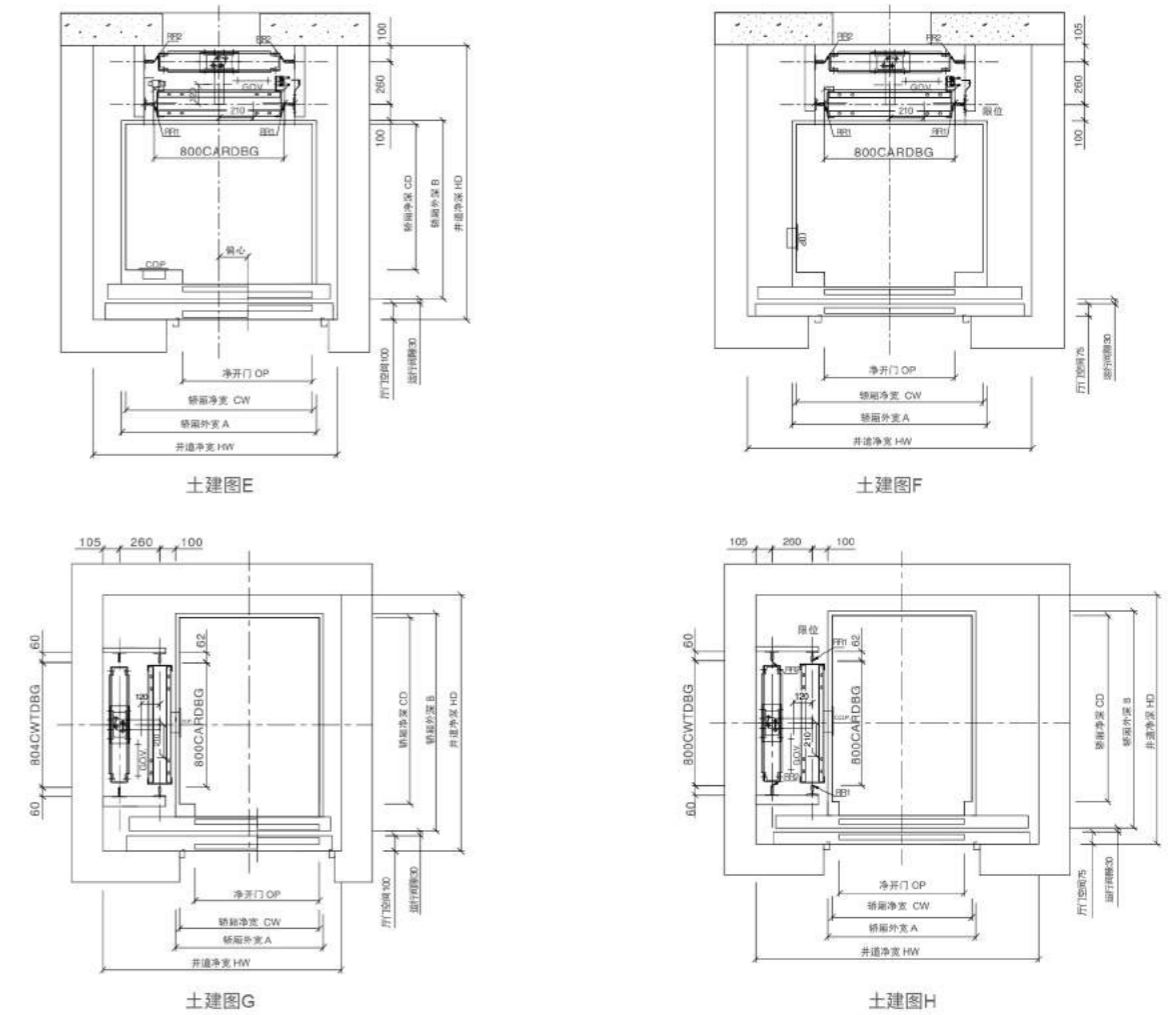
UN-VILLA II 土建图 LAYOUT DRAWING



载重Q Capacity	速度V Speed	井道净尺寸 Shaft clear dimension	轿厢净尺寸 Car clear dimension	开门尺寸 Opening size	顶层高度K Overhead	底坑深度S Pit depth	底坑反力 Pit reaction		土建图 Layout
(KG)	(m/s)	宽HWx深HD (mm)	宽CWx深CD (mm)	宽OPx高OPH (mm)	(mm)	(mm)	R1(KN)	R2(KN)	
250	0.4	1400X1400	950X800	旁开700X2000	≥3750	≥400	41.6	33.6	A
320		1550X1400	1050X800	旁开800X2000					A
320		1750X1400	1050X810	中分800X2000					B
400		1600X1500	1150X900	旁开800X2000					A
400		1750X1500	1150X910	中分800X2000					B
400		1570X1450	850X1000	旁开800X2000					C
400		1800X1450	900X1010	中分800X2000					D

* 以上顶层高度是在轿厢总高2000mm时计算值 The overhead is calculated under the cabin height 2000mm

UN-VILLA I 土建图 LAYOUT DRAWING



载重Q Capacity	速度V Speed	井道净尺寸 Shaft clear dimension	轿厢净尺寸 Car clear dimension	开门尺寸 Opening size	顶层高度K Overhead	底坑深度S Pit depth	底坑反力 Pit reaction		土建图 Layout
(KG)	(m/s)	宽HWx深HD (mm)	宽CWx深CD (mm)	宽OPx高OPH (mm)	(mm)	(mm)	R1(KN)	R2(KN)	
250	0.4	1350X1500	950X700	旁开700X2000	≥2900	≥280	41.6	33.6	E
250		1550X1470	950X710	中分700X2000					F
320		1450X1600	1050X800	旁开800X2000					E
320		1750X1570	1050X810	中分800X2000					F
400		1500X1700	1150X900	旁开800X2000					E
400		1750X1670	1150X910	中分800X2000					F
400		1530X1650	900X1200	旁开800X2000					G
400		1820X1600	900X1200	中分800X2000					H

* 以上顶层高度是在轿厢总高2000mm时计算值 The overhead is calculated under the cabin height 2000mm